

Econ 204 2023

Lecture 2

Outline

1. Cardinality (cont.)
2. Algebraic Structures: Fields and Vector Spaces
3. Axioms for \mathbf{R}
4. Sup, Inf, and the Supremum Property
5. Intermediate Value Theorem

Cardinality (cont.)

Notation: Given a set A , 2^A is the set of all subsets of A . This is the “power set” of A , also denoted $P(A)$.

Important example of an uncountable set:

Theorem 1 (Cantor). $2^{\mathbb{N}}$, the set of all subsets of \mathbb{N} , is not countable.

Proof. Suppose $2^{\mathbb{N}}$ is countable. Then there is a bijection $f : \mathbb{N} \rightarrow 2^{\mathbb{N}}$. Let $A_m = f(m)$. We create an infinite matrix, whose

$(m, n)^{th}$ entry is 1 if $n \in A_m$, 0 otherwise:

			N					
			1	2	3	4	5	...
A_1	=	\emptyset	0	0	0	0	0	...
A_2	=	$\{1\}$	1	0	0	0	0	...
2^N	A_3	= $\{1, 2, 3\}$	1	1	1	0	0	...
A_4	=	N	1	1	1	1	1	...
A_5	=	$2N$	0	1	0	1	0	...
	\vdots		\vdots	\vdots	\vdots	\vdots	\vdots	\ddots

Now, on the main diagonal, change all the 0s to 1s and vice

Let

$$t_{mn} = \begin{cases} 1 & \text{if } n \in A_m \\ 0 & \text{if } n \notin A_m \end{cases}$$

Let $A = \{m \in \mathbf{N} : t_{mm} = 0\}$.

$$m \in A \Leftrightarrow t_{mm} = 0$$

$$\Leftrightarrow m \notin A_m$$

$$1 \in A \Leftrightarrow 1 \notin A_1 \text{ so } A \neq A_1$$

$$2 \in A \Leftrightarrow 2 \notin A_2 \text{ so } A \neq A_2$$

\vdots

$$m \in A \Leftrightarrow m \notin A_m \text{ so } A \neq A_m$$

Therefore, $A \neq f(m)$ for any m , so f is not onto, contradiction.

□

Some Additional Facts About Cardinality

Recall we let $|A|$ denote the cardinality of a set A .

- if A is numerically equivalent to $\{1, \dots, n\}$ for some $n \in \mathbb{N}$, then $|A| = n$.
- A and B are numerically equivalent if and only if $|A| = |B|$
- if $|A| = n$ and A is a proper subset of B (that is, $A \subsetneq B$ and $A \neq B$) then $|A| < |B|$

- if A is countable and B is uncountable, then

$$n < |A| < |B| \quad \forall n \in \mathbf{N}$$

- if $A \subseteq B$ then $|A| \leq |B|$
- if $r : A \rightarrow B$ is 1-1, then $|A| \leq |B|$
- if B is countable and $A \subseteq B$, then A is at most countable, that is, A is either empty, finite, or countable
- if $r : A \rightarrow B$ is 1-1 and B is countable, then A is at most countable

Algebraic Structures: Fields

Definition 1. A field $\mathcal{F} = (F, +, \cdot)$ is a 3-tuple consisting of a set F and two binary operations $+, \cdot : F \times F \rightarrow F$ such that

1. *Associativity of $+$:*

$$\forall \alpha, \beta, \gamma \in F, (\alpha + \beta) + \gamma = \alpha + (\beta + \gamma)$$

2. *Commutativity of $+$:*

$$\forall \alpha, \beta \in F, \alpha + \beta = \beta + \alpha$$

3. *Existence of additive identity:*

$$\exists ! 0 \in F \text{ s.t. } \forall \alpha \in F, \alpha + 0 = 0 + \alpha = \alpha$$

4. *Existence of additive inverse:*

$$\forall \alpha \in F \exists! (-\alpha) \in F \text{ s.t. } \alpha + (-\alpha) = (-\alpha) + \alpha = 0$$

Define $\alpha - \beta = \alpha + (-\beta)$

5. *Associativity of \cdot :*

$$\forall \alpha, \beta, \gamma \in F, (\alpha \cdot \beta) \cdot \gamma = \alpha \cdot (\beta \cdot \gamma)$$

6. *Commutativity of \cdot :*

$$\forall \alpha, \beta \in F, \alpha \cdot \beta = \beta \cdot \alpha$$

7. *Existence of multiplicative identity:*

$$\exists! 1 \in F \text{ s.t. } 1 \neq 0 \text{ and } \forall \alpha \in F, \alpha \cdot 1 = 1 \cdot \alpha = \alpha$$

8. *Existence of multiplicative inverse:*

$$\forall \alpha \in F \text{ s.t. } \alpha \neq 0 \exists! \alpha^{-1} \in F \text{ s.t. } \alpha \cdot \alpha^{-1} = \alpha^{-1} \cdot \alpha = 1$$

Define $\frac{\alpha}{\beta} = \alpha\beta^{-1}$.

9. *Distributivity of multiplication over addition:*

$$\forall \alpha, \beta, \gamma \in F, \alpha \cdot (\beta + \gamma) = \alpha \cdot \beta + \alpha \cdot \gamma$$

Fields

Examples:

- \mathbf{R}

- $\mathbf{C} = \{x + iy : x, y \in \mathbf{R}\}$. $i^2 = -1$, so

$$(x + iy)(w + iz) = xw + ixz + iwy + i^2yz = (xw - yz) + i(xz + wy)$$

- \mathbf{Q} : $\mathbf{Q} \subset \mathbf{R}$, $\mathbf{Q} \neq \mathbf{R}$. \mathbf{Q} is closed under $+$, \cdot , taking additive and multiplicative inverses; the field axioms are inherited from the field axioms on \mathbf{R} , so \mathbf{Q} is a field.

- \mathbf{N} is not a field: no additive identity.
- \mathbf{Z} is not a field; no multiplicative inverse for 2.
- $\mathbf{Q}(\sqrt{2})$, the smallest field containing $\mathbf{Q} \cup \{\sqrt{2}\}$. Take \mathbf{Q} , add $\sqrt{2}$, and close up under $+$, \cdot , taking additive and multiplicative inverses. One can show

$$\mathbf{Q}(\sqrt{2}) = \{q + r\sqrt{2} : q, r \in \mathbf{Q}\}$$

For example,

$$(q + r\sqrt{2})^{-1} = \frac{q}{q^2 - 2r^2} - \frac{r}{q^2 - 2r^2}\sqrt{2}$$

- A finite field: $F_2 = (\{0, 1\}, +, \cdot)$ where

$$\begin{array}{rcccl} & & 0 + 0 & = & 0 & & & & 0 \cdot 0 & = & 0 \\ 0 + 1 & = & 1 + 0 & = & 1 & & 0 \cdot 1 & = & 1 \cdot 0 & = & 0 \\ & & 1 + 1 & = & 0 & & & & 1 \cdot 1 & = & 1 \end{array}$$

(“Arithmetic mod 2”)

Vector Spaces

Definition 2. A vector space is a 4-tuple $(V, F, +, \cdot)$ where V is a set of elements, called vectors, F is a field, $+$ is a binary operation on V called vector addition, and $\cdot : F \times V \rightarrow V$ is called scalar multiplication, satisfying

1. *Associativity of $+$:*

$$\forall x, y, z \in V, (x + y) + z = x + (y + z)$$

2. *Commutativity of $+$:*

$$\forall x, y \in V, x + y = y + x$$

3. *Existence of vector additive identity:*

$$\exists! 0 \in V \text{ s.t. } \forall x \in V, x + 0 = 0 + x = x$$

4. *Existence of vector additive inverse:*

$$\forall x \in V \exists! (-x) \in V \text{ s.t. } x + (-x) = (-x) + x = 0$$

Define $x - y$ to be $x + (-y)$.

5. *Distributivity of scalar multiplication over vector addition:*

$$\forall \alpha \in F, x, y \in V, \alpha \cdot (x + y) = \alpha \cdot x + \alpha \cdot y$$

6. *Distributivity of scalar multiplication over scalar addition:*

$$\forall \alpha, \beta \in F, x \in V \quad (\alpha + \beta) \cdot x = \alpha \cdot x + \beta \cdot x$$

7. *Associativity of \cdot :*

$$\forall \alpha, \beta \in F, x \in V \quad (\alpha \cdot \beta) \cdot x = \alpha \cdot (\beta \cdot x)$$

8. *Multiplicative identity:*

$$\forall x \in V \quad 1 \cdot x = x$$

(*Note that 1 is the multiplicative identity in F ; $1 \notin V$)*

Vector Spaces

Examples:

1. \mathbf{R}^n over \mathbf{R} .

2. \mathbf{R} is a vector space over \mathbf{Q} :

(scalar multiplication) $q \cdot r = qr$ (product in \mathbf{R})

\mathbf{R} is not finite-dimensional over \mathbf{Q} , i.e. \mathbf{R} is not \mathbf{Q}^n for any $n \in \mathbf{N}$.

3. \mathbf{R} is a vector space over \mathbf{R} .

4. $\mathbb{Q}(\sqrt{2})$ is a vector space over \mathbb{Q} . As a vector space, it is \mathbb{Q}^2 ; as a field, you need to take the funny field multiplication.
5. $\mathbb{Q}(\sqrt[3]{2})$, as a vector space over \mathbb{Q} , is \mathbb{Q}^3 .
6. $(F_2)^n$ is a *finite* vector space over F_2 .
7. $C([0, 1])$, the space of all continuous real-valued functions on $[0, 1]$, is a vector space over \mathbb{R} .

- vector addition:

$$(f + g)(t) = f(t) + g(t)$$

Note we define the function $f + g$ by specifying what value it takes for each $t \in [0, 1]$.

- scalar multiplication:

$$(\alpha f)(t) = \alpha(f(t))$$

- vector additive identity: 0 is the function which is identically zero: $0(t) = 0$ for all $t \in [0, 1]$.
- vector additive inverse:

$$(-f)(t) = -(f(t))$$

Axioms for \mathbf{R}

1. \mathbf{R} is a field with the usual operations $+$, \cdot , additive identity 0, and multiplicative identity 1.
2. **Order Axiom:** There is a complete ordering \leq , i.e. \leq is reflexive, transitive, antisymmetric ($\alpha \leq \beta, \beta \leq \alpha \Rightarrow \alpha = \beta$) with the property that

$$\forall \alpha, \beta \in \mathbf{R} \text{ either } \alpha \leq \beta \text{ or } \beta \leq \alpha$$

The order is compatible with $+$ and \cdot , i.e.

$$\forall \alpha, \beta, \gamma \in \mathbf{R} \begin{cases} \alpha \leq \beta \Rightarrow \alpha + \gamma \leq \beta + \gamma \\ \alpha \leq \beta, 0 \leq \gamma \Rightarrow \alpha\gamma \leq \beta\gamma \end{cases}$$

$\alpha \geq \beta$ means $\beta \leq \alpha$. $\alpha < \beta$ means $\alpha \leq \beta$ and $\alpha \neq \beta$.

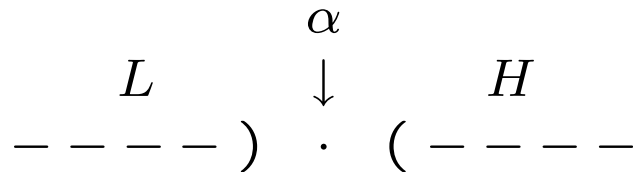
Completeness Axiom

3. **Completeness Axiom:** Suppose $L, H \subseteq \mathbf{R}$, $L \neq \emptyset \neq H$ satisfy

$$l \leq h \quad \forall l \in L, h \in H$$

Then

$$\exists \alpha \in \mathbf{R} \text{ s.t. } l \leq \alpha \leq h \quad \forall l \in L, h \in H$$



The Completeness Axiom differentiates \mathbf{R} from \mathbf{Q} : \mathbf{Q} satisfies all the axioms for \mathbf{R} except the Completeness Axiom.

Sups, Infs, and the Supremum Property

Definition 3. Suppose $X \subseteq \mathbf{R}$. We say u is an upper bound for X if

$$x \leq u \quad \forall x \in X$$

and ℓ is a lower bound for X if

$$\ell \leq x \quad \forall x \in X$$

X is bounded above if there is an upper bound for X , and bounded below if there is a lower bound for X .

Definition 4. Suppose X is bounded above. The supremum of X , written $\sup X$, is the least upper bound for X , i.e. $\sup X$ satisfies

$$\sup X \geq x \quad \forall x \in X \quad (\sup X \text{ is an upper bound})$$

$$\forall y < \sup X \quad \exists x \in X \text{ s.t. } x > y \quad (\text{there is no smaller upper bound})$$

Analogously, suppose X is bounded below. The infimum of X , written $\inf X$, is the greatest lower bound for X , i.e. $\inf X$ satisfies

$$\inf X \leq x \quad \forall x \in X \quad (\inf X \text{ is a lower bound})$$

$$\forall y > \inf X \quad \exists x \in X \text{ s.t. } x < y \quad (\text{there is no greater lower bound})$$

If X is not bounded above, write $\sup X = \infty$. If X is not bounded below, write $\inf X = -\infty$. Convention: $\sup \emptyset = -\infty$, $\inf \emptyset = +\infty$.

The Supremum Property

The Supremum Property: Every nonempty set of real numbers that is bounded above has a supremum, which is a real number. Every nonempty set of real numbers that is bounded below has an infimum, which is a real number.

Note: $\sup X$ need not be an element of X . For example, $\sup(0, 1) = 1 \notin (0, 1)$.

The Supremum Property

Theorem 2 (Theorem 6.8, plus . . .). *The Supremum Property and the Completeness Axiom are equivalent.*

Proof. Assume the Completeness Axiom. Let $X \subseteq \mathbf{R}$ be a nonempty set that is bounded above. Let U be the set of all upper bounds for X . Since X is bounded above, $U \neq \emptyset$. If $x \in X$ and $u \in U$, $x \leq u$ since u is an upper bound for X . So

$$x \leq u \quad \forall x \in X, u \in U$$

By the Completeness Axiom,

$$\exists \alpha \in \mathbf{R} \text{ s.t. } x \leq \alpha \leq u \quad \forall x \in X, u \in U$$

α is an upper bound for X , and it is less than or equal to every other upper bound for X , so it is the least upper bound for X ,

so $\sup X = \alpha \in \mathbf{R}$. The case in which X is bounded below is similar. Thus, the Supremum Property holds.

Conversely, assume the Supremum Property. Suppose $L, H \subseteq \mathbf{R}$, $L \neq \emptyset \neq H$, and

$$\ell \leq h \quad \forall \ell \in L, h \in H$$

Since $L \neq \emptyset$ and L is bounded above (by any element of H), $\alpha = \sup L$ exists and is real. By the definition of supremum, α is an upper bound for L , so

$$\ell \leq \alpha \quad \forall \ell \in L$$

Suppose $h \in H$. Then h is an upper bound for L , so by the definition of supremum, $\alpha \leq h$. Therefore, we have shown that

$$\ell \leq \alpha \leq h \quad \forall \ell \in L, h \in H$$

so the Completeness Axiom holds. □

Archimedean Property

Theorem 3 (Archimedean Property, Theorem 6.10 + ...).

$$\forall x, y \in \mathbf{R}, y > 0 \exists n \in \mathbf{N} \text{ s.t. } ny = \underbrace{(y + \cdots + y)}_{n \text{ times}} > x$$

Proof. Exercise. This is a nice exercise in proof by contradiction, using the Supremum Property. □

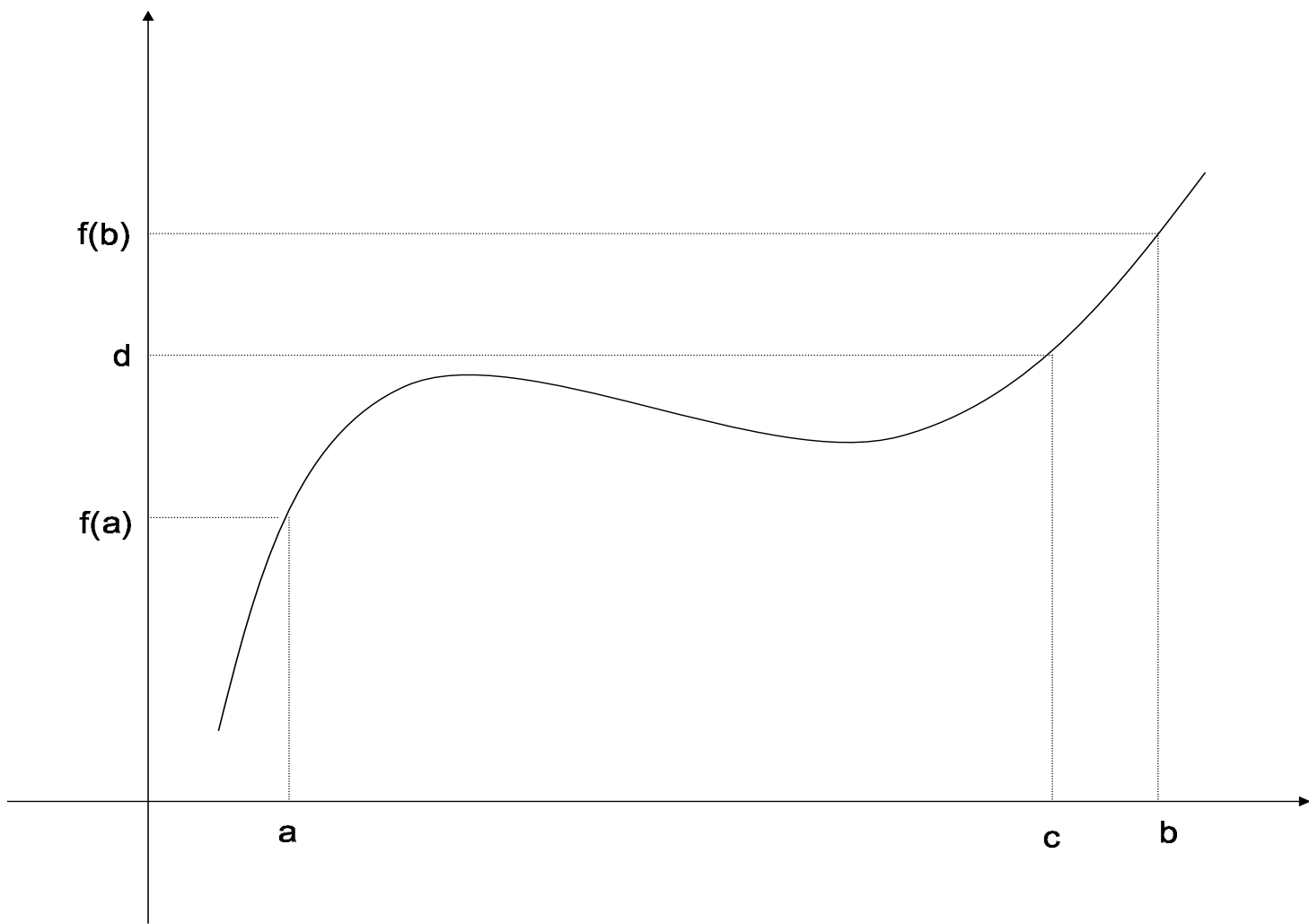
Intermediate Value Theorem

Theorem 4 (Intermediate Value Theorem). *Suppose $f : [a, b] \rightarrow \mathbf{R}$ is continuous, and $f(a) < d < f(b)$. Then there exists $c \in (a, b)$ such that $f(c) = d$.*

Proof. Later, we will give a slick proof. Here, we give a bare-hands proof using the Supremum Property. Let

$$B = \{x \in [a, b] : f(x) < d\}$$

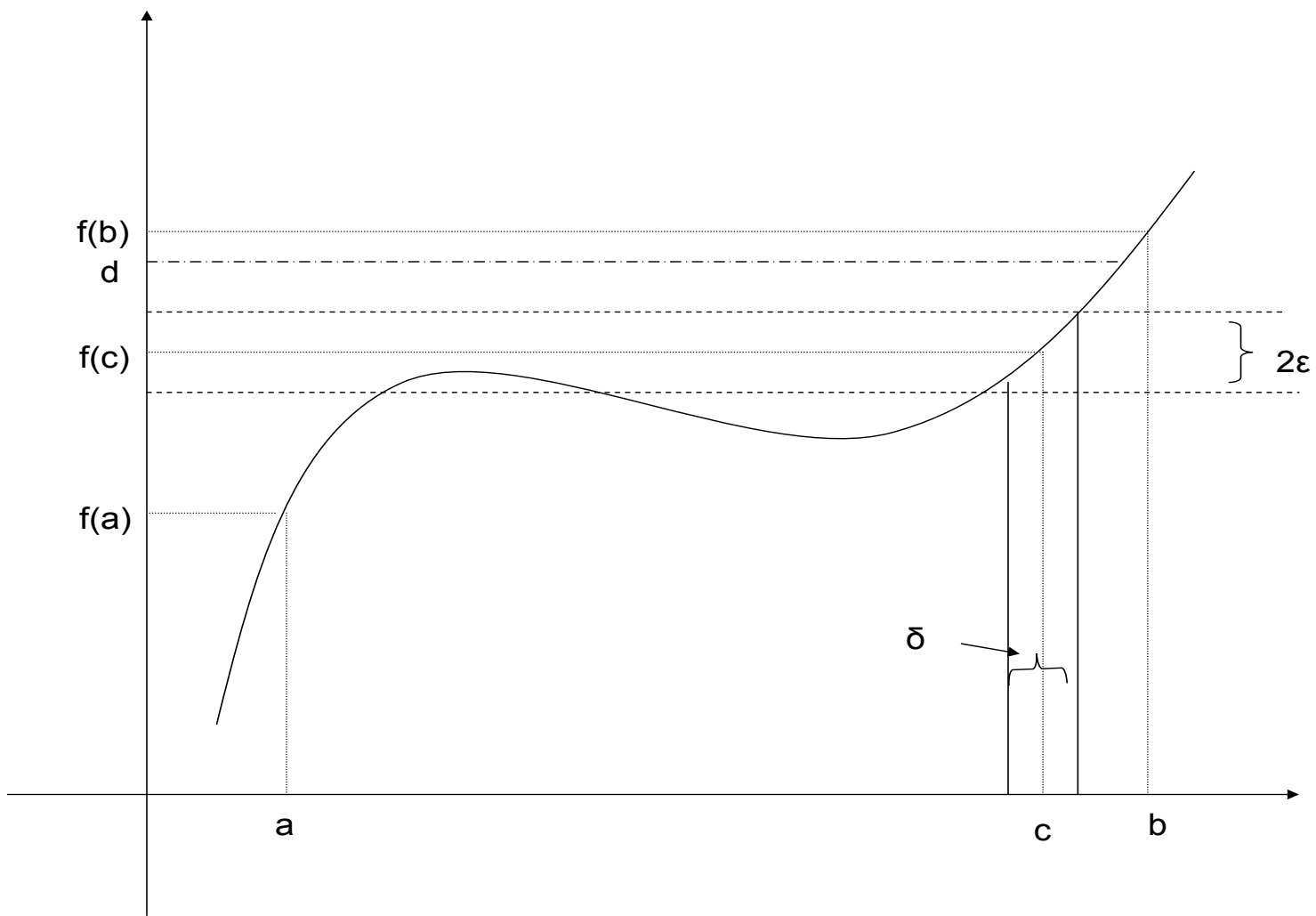
$a \in B$, so $B \neq \emptyset$; $B \subseteq [a, b]$, so B is bounded above. By the Supremum Property, $\sup B$ exists and is real so let $c = \sup B$. Since $a \in B$, $c \geq a$. $B \subseteq [a, b]$, so $c \leq b$. Therefore, $c \in [a, b]$.



We claim that $f(c) = d$. If not, suppose $f(c) < d$. Then since $f(b) > d$, $c \neq b$, so $c < b$. Let $\varepsilon = \frac{d-f(c)}{2} > 0$. Since f is continuous at c , there exists $\delta > 0$ such that

$$\begin{aligned}
 |x - c| < \delta &\Rightarrow |f(x) - f(c)| < \varepsilon \\
 &\Rightarrow f(x) < f(c) + \varepsilon \\
 &= f(c) + \frac{d-f(c)}{2} \\
 &= \frac{f(c)+d}{2} \\
 &< \frac{d+d}{2} \\
 &= d
 \end{aligned}$$

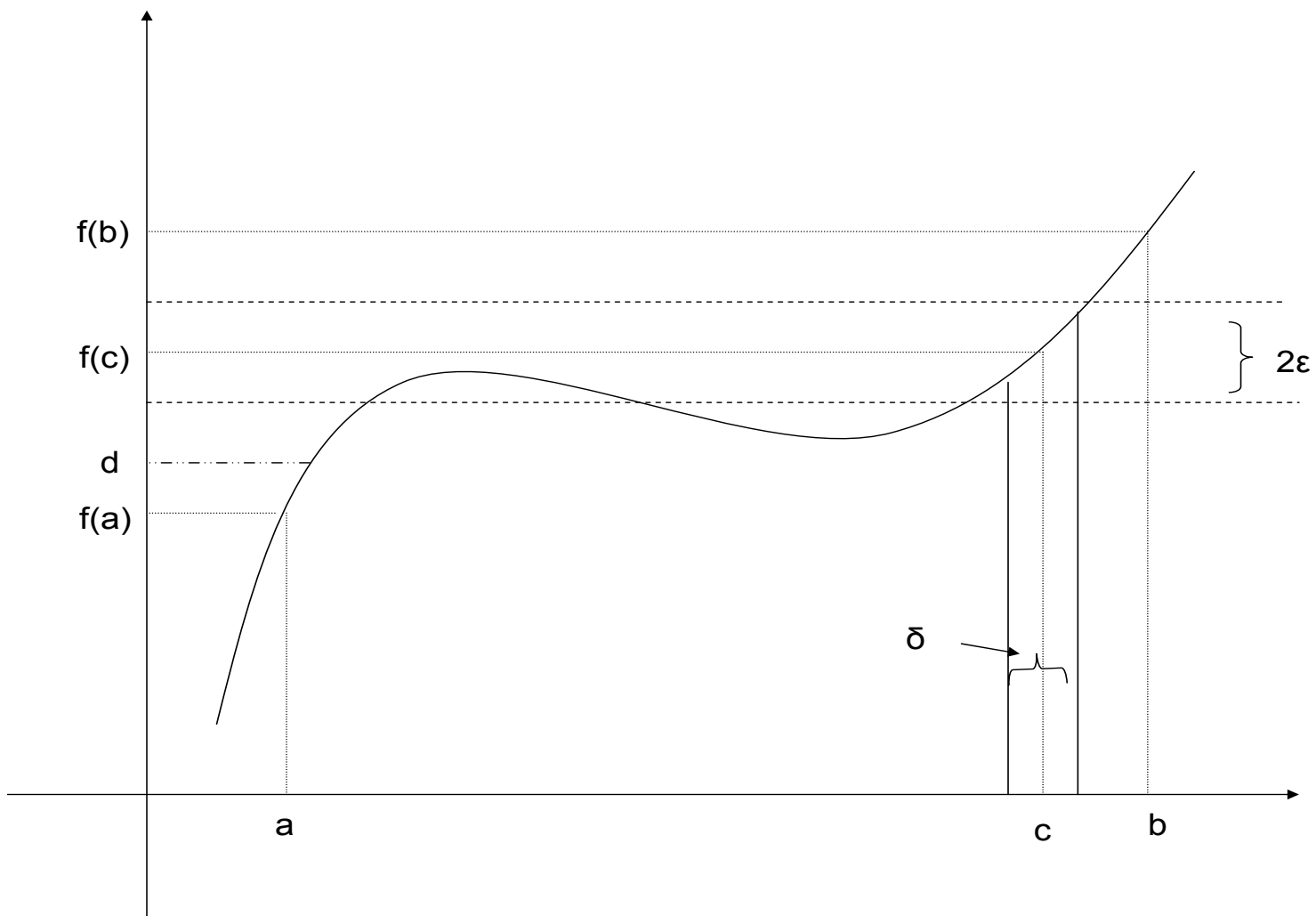
so $(c, c + \delta) \subseteq B$, so $c \neq \sup B$, contradiction.



Suppose $f(c) > d$. Then since $f(a) < d$, $a \neq c$, so $c > a$. Let $\varepsilon = \frac{f(c)-d}{2} > 0$. Since f is continuous at c , there exists $\delta > 0$ such that

$$\begin{aligned}
 |x - c| < \delta &\Rightarrow |f(x) - f(c)| < \varepsilon \\
 &\Rightarrow f(x) > f(c) - \varepsilon \\
 &= f(c) - \frac{f(c)-d}{2} \\
 &= \frac{f(c)+d}{2} \\
 &> \frac{d+d}{2} \\
 &= d
 \end{aligned}$$

so $(c-\delta, c+\delta) \cap B = \emptyset$. So either there exists $x \in B$ with $x \geq c + \delta$ (in which case c is not an upper bound for B) or $c - \delta$ is an upper bound for B (in which case c is not the least upper bound for B); in either case, $c \neq \sup B$, contradiction.



Since $f(c) \neq d$, $f(c) \neq d$, and the order is complete, $f(c) = d$.
Since $f(a) < d$ and $f(b) > d$, $a \neq c \neq b$, so $c \in (a, b)$. \square

Corollary 1. *There exists $x \in \mathbf{R}$ such that $x^2 = 2$.*

Proof. Let $f(x) = x^2$, for $x \in [0, 2]$. f is continuous (Why?).
 $f(0) = 0 < 2$ and $f(2) = 4 > 2$, so by the Intermediate Value
Theorem, there exists $c \in (0, 2)$ such that $f(c) = 2$, i.e. such
that $c^2 = 2$. □