























































Table 2 (cont.)

ID	$\rho$	$\alpha$	$\sigma$	$A$	$r$	Standard errors		$F$ -value
						$A$	$r$	
11	0.144	0.927	-1.168	19.575	-0.168	6.190	0.290	-36.330
72	0.170	0.670	-1.205	2.349	-0.205	0.155	0.073	-48.241
38	0.219	0.787	-1.280	5.323	-0.280	0.430	0.084	-61.866
69	0.231	0.638	-1.300	2.092	-0.300	0.197	0.108	-28.393
29	0.260	0.922	-1.351	28.095	-0.351	17.856	0.443	-20.957
34	0.291	0.532	-1.410	1.200	-0.410	0.099	0.077	-30.197
28	0.315	0.893	-1.460	22.187	-0.460	9.393	0.278	-16.375
66	0.329	0.581	-1.490	1.631	-0.490	0.181	0.123	-18.562
15	0.334	0.699	-1.501	3.549	-0.501	0.183	0.057	-72.855
50	0.337	0.579	-1.509	1.614	-0.509	0.084	0.064	-55.396
30	0.428	0.657	-1.747	3.123	-0.747	0.287	0.096	-46.677
9	0.493	0.748	-1.972	8.575	-0.972	0.905	0.110	-60.649
23	0.497	0.746	-1.987	8.508	-0.987	1.295	0.129	-32.981
7	0.543	0.706	-2.187	6.775	-1.187	1.193	0.167	-43.891
41	0.577	0.812	-2.362	31.464	-1.362	8.512	0.151	-75.664
39	0.583	0.649	-2.399	4.393	-1.399	0.709	0.152	-30.944
14	0.615	0.771	-2.598	23.339	-1.598	8.231	0.204	-38.780
5	0.658	0.576	-2.923	2.463	-1.923	0.293	0.230	-31.056
59	0.674	0.522	-3.065	1.317	-2.065	0.146	0.235	-31.640
51	0.702	0.580	-3.351	2.970	-2.351	0.766	0.373	1.957
12	0.823	0.639	-5.659	25.376	-4.659	25.809	1.452	26.995
8	0.942	0.532	-17.346	9.204	-16.346	5.941	3.734	-13.037
54	0.992	0.504	-117.970	6.345	-116.970	12.567	36.202	-96.376

Figure 1A. Decision-level distribution of expenditure on tokens given to others  
as a fraction of total expenditure on tokens

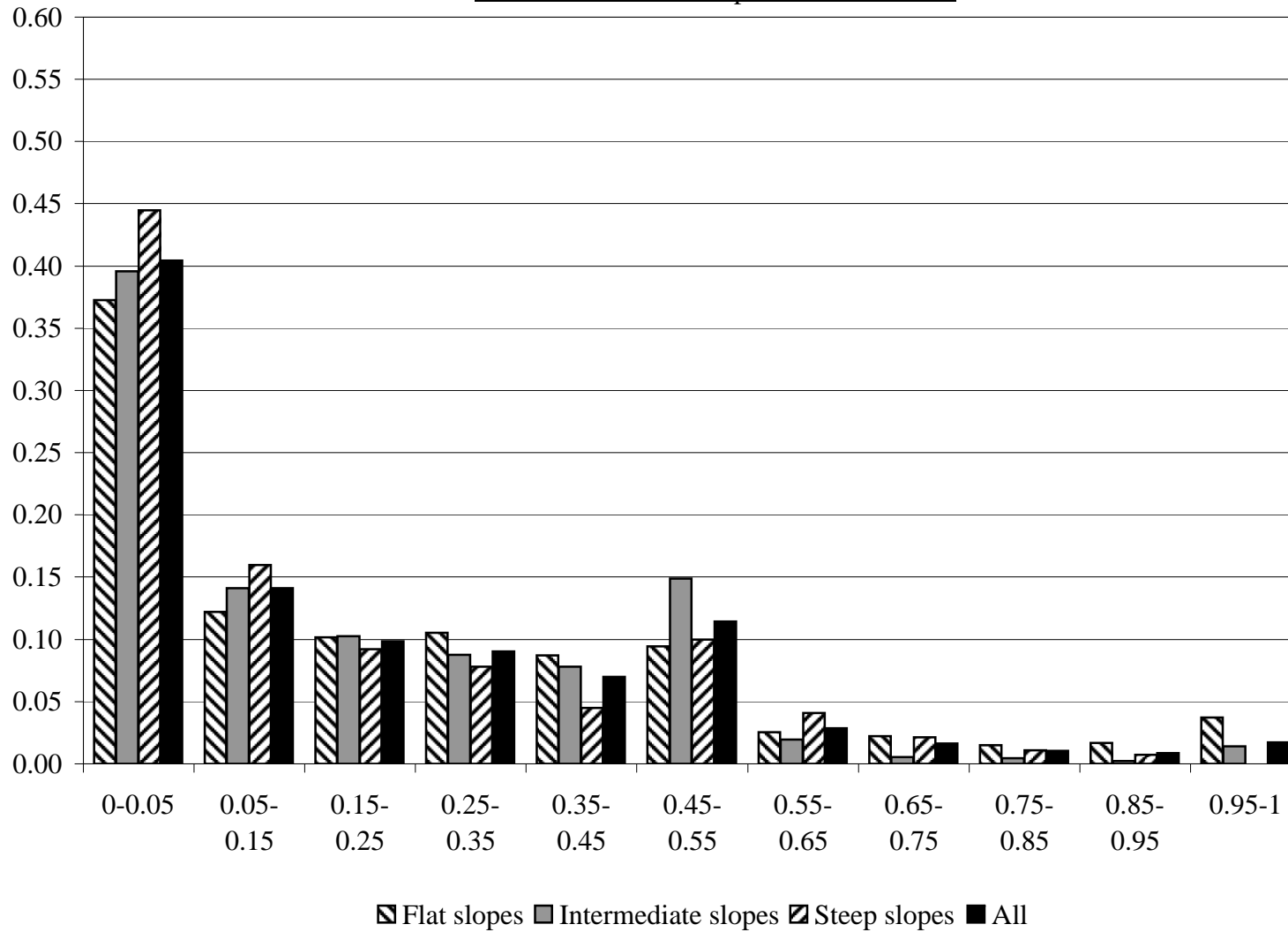


Figure 1B. Decision-level distribution of tokens given to others as a fraction of total tokens kept and given

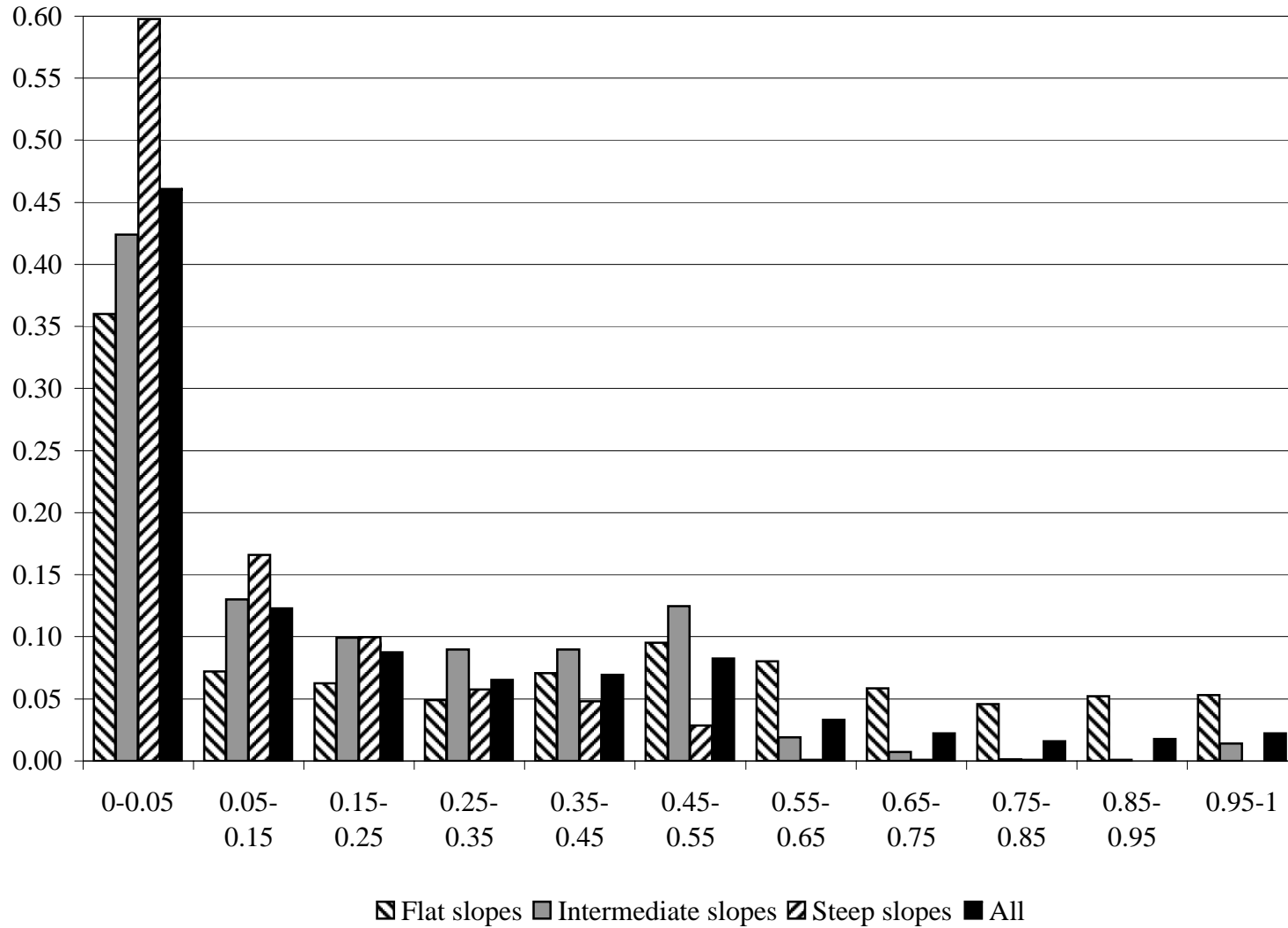


Figure 2. The distribution of the expenditure on tokens given to others a fraction of total expenditure aggregated to the subject level

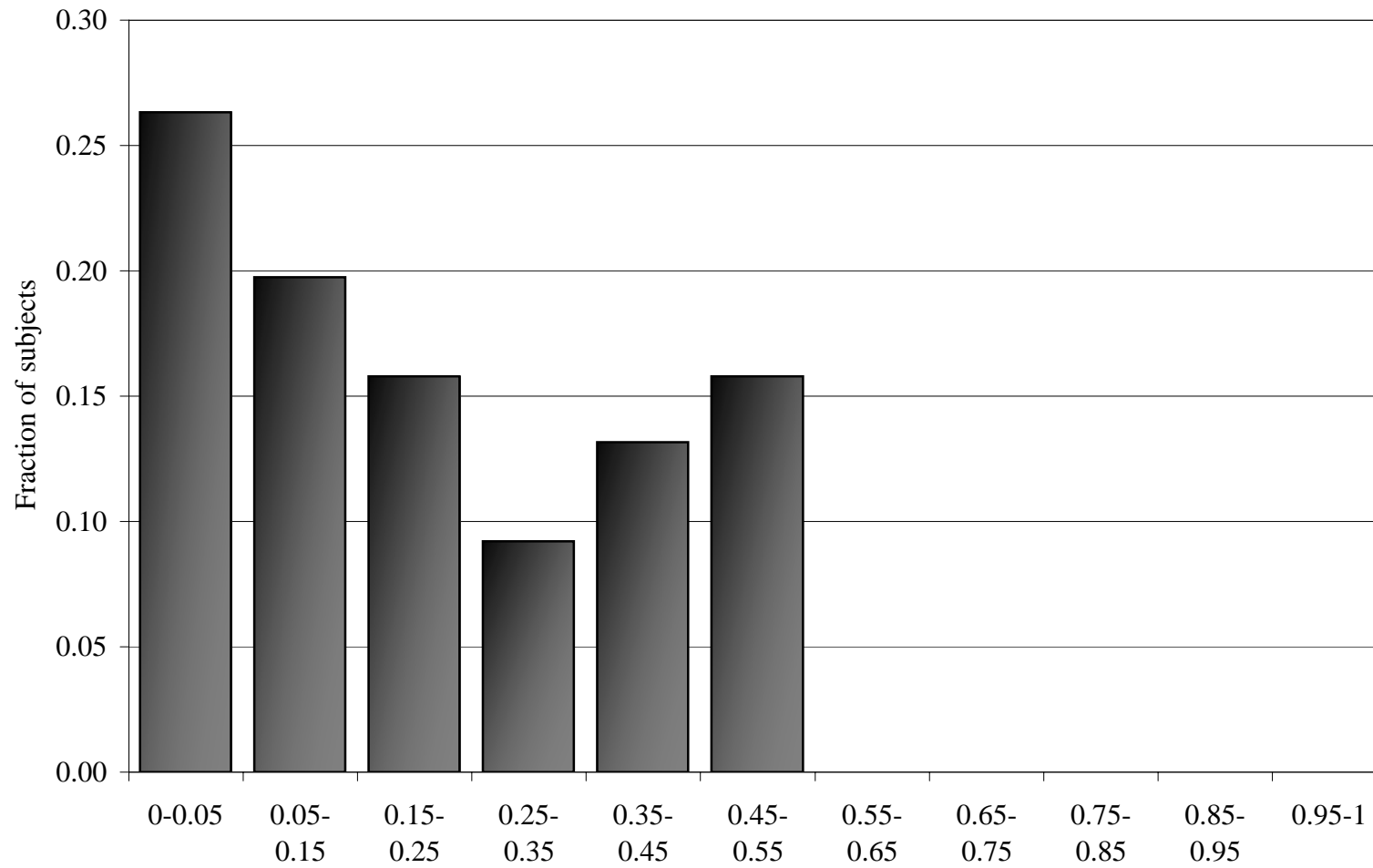


Figure 3. The allocations of subjects with prototypical references

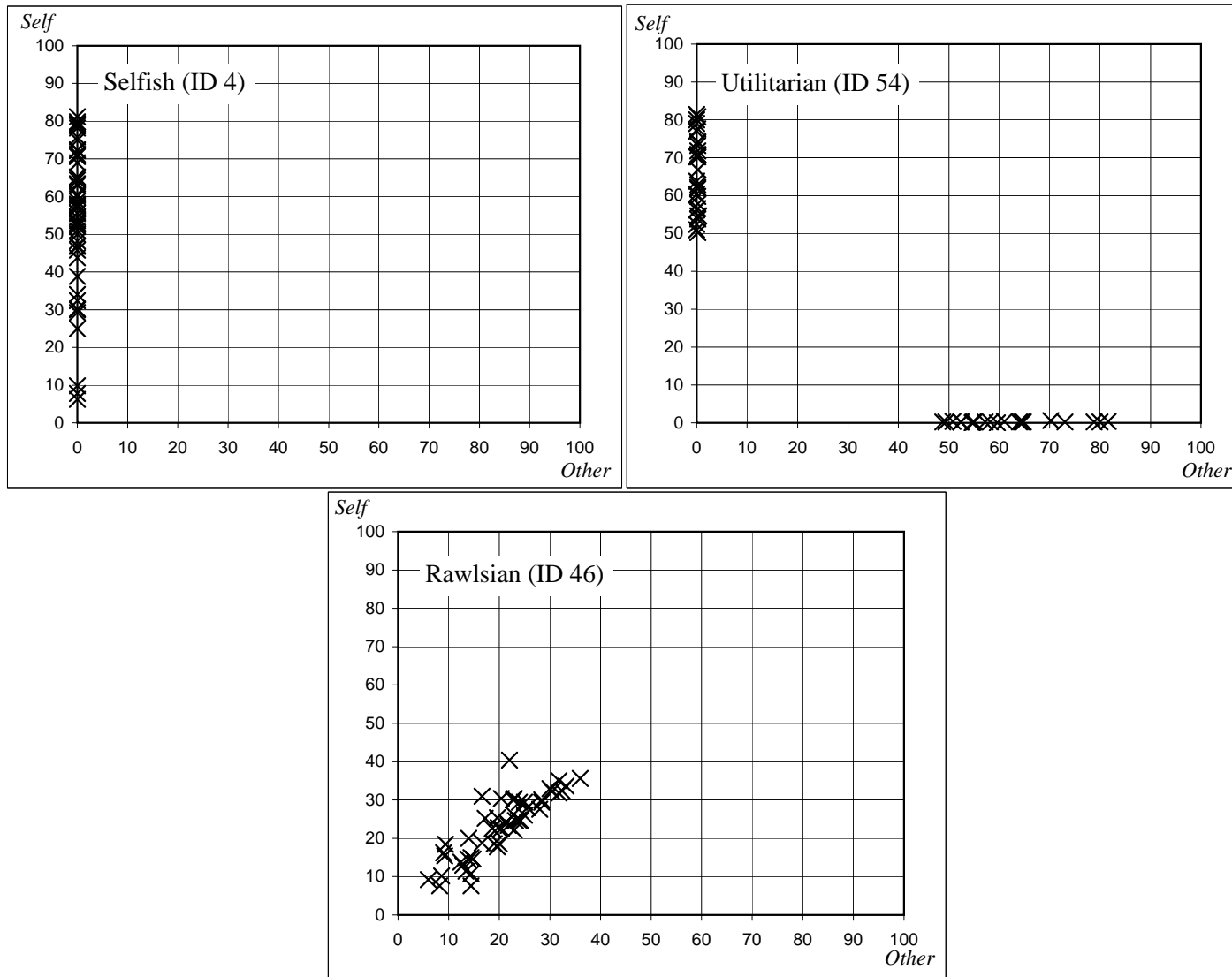


Figure 4. The construction of the  $E$ -index for a simple violation of  
GADD

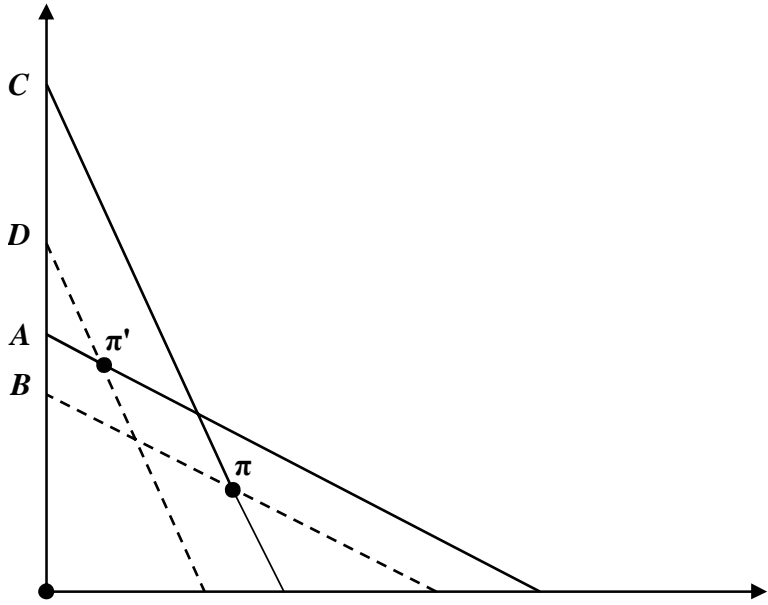


Figure 5. Distributions of GARP violation indices

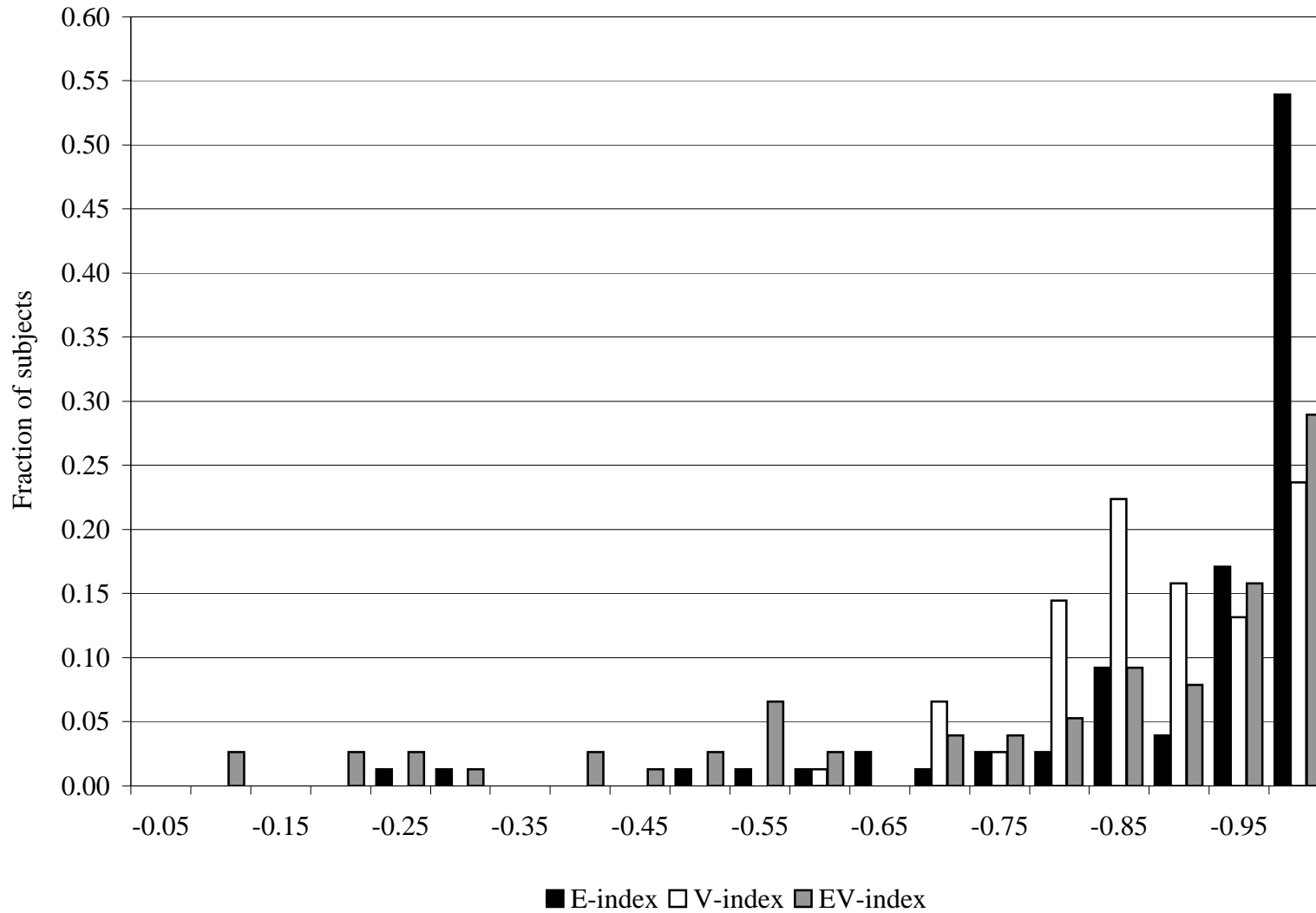


Figure 6. Distribution of (normalized) consistency values

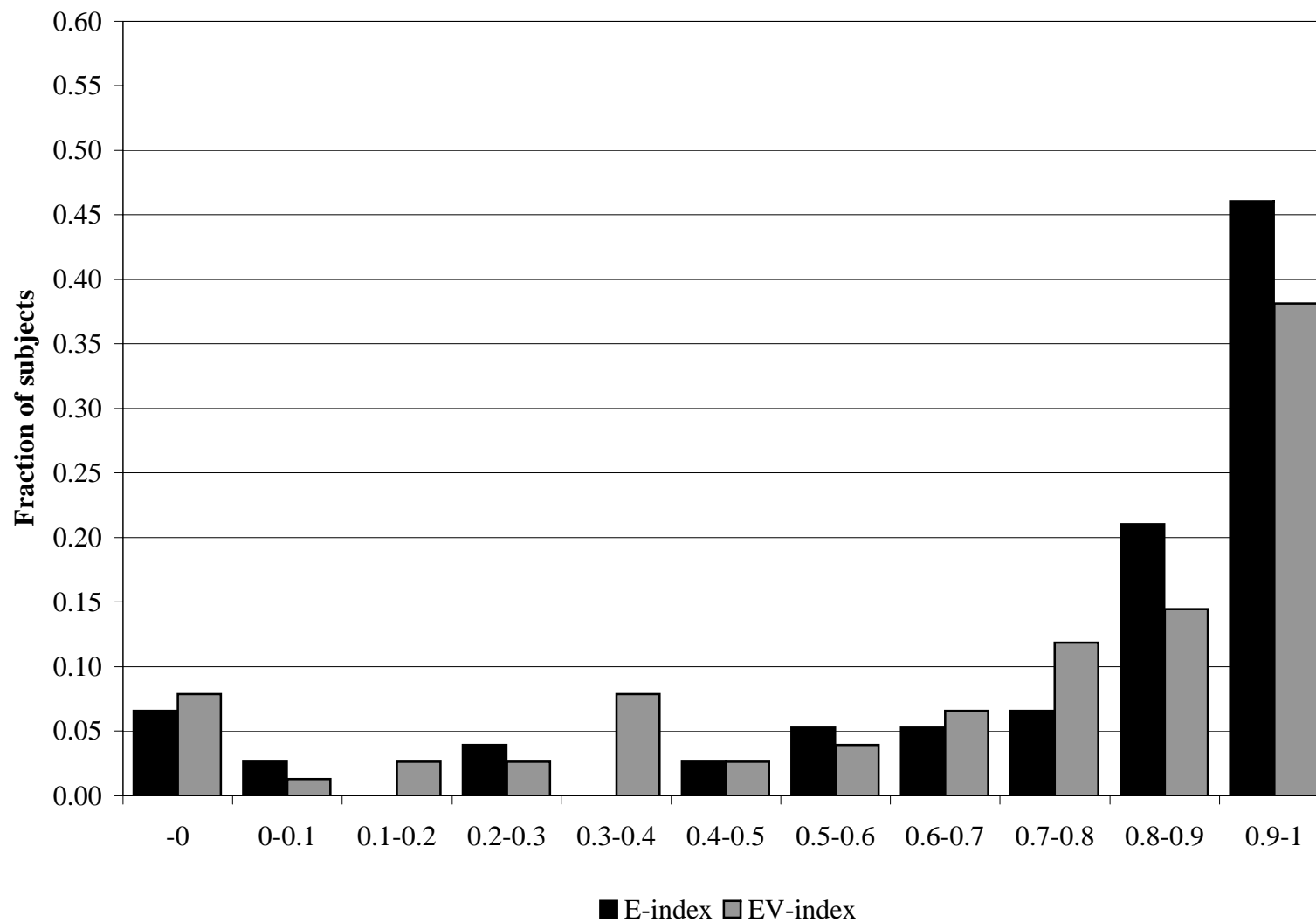




Figure 7. Illustration of recoverability for subjects whose choices fit with prototypical utility functions

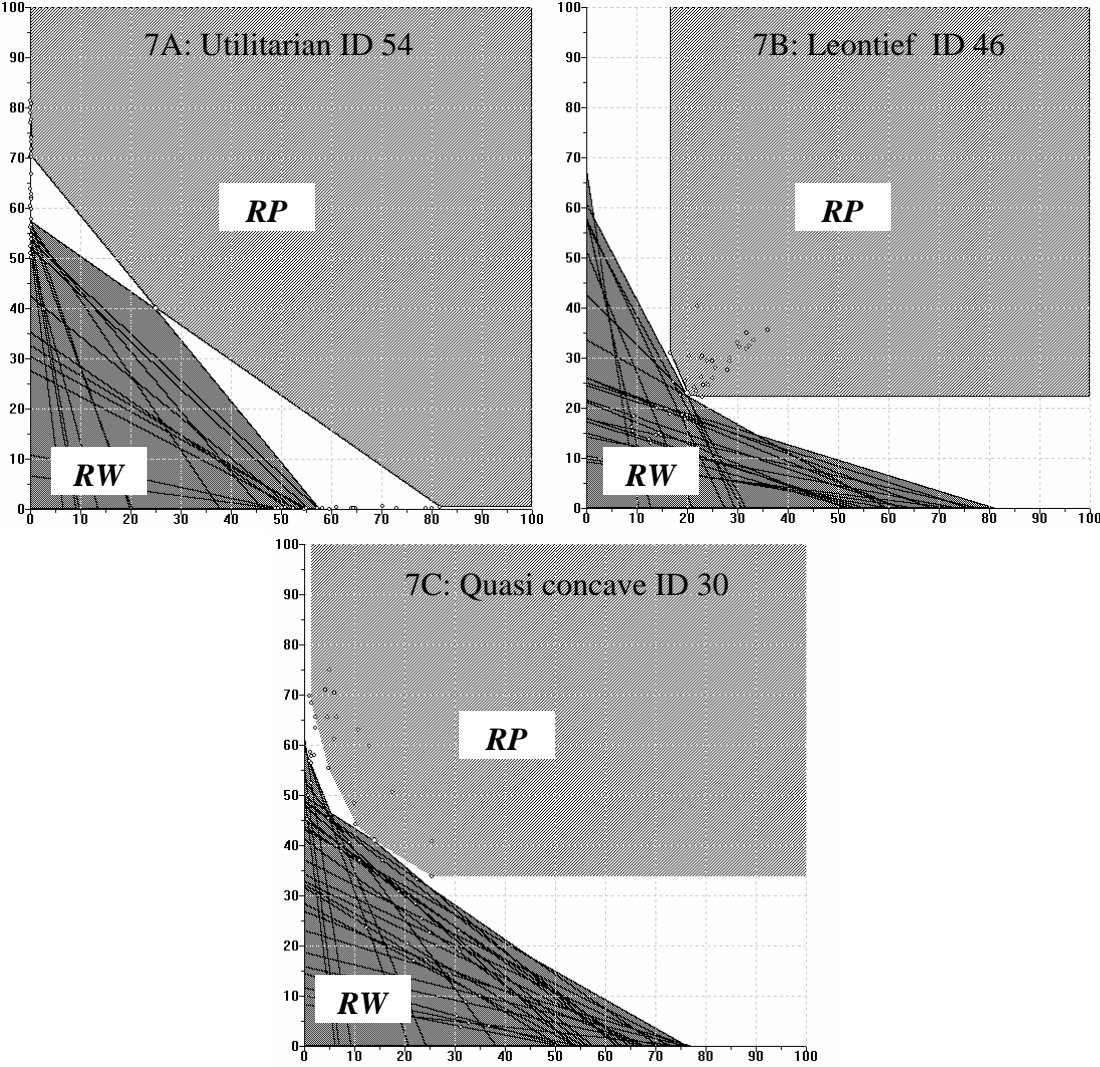


Figure 8. Illustration of forecasting behavior for subjects whose choices fit with prototypical utility functions

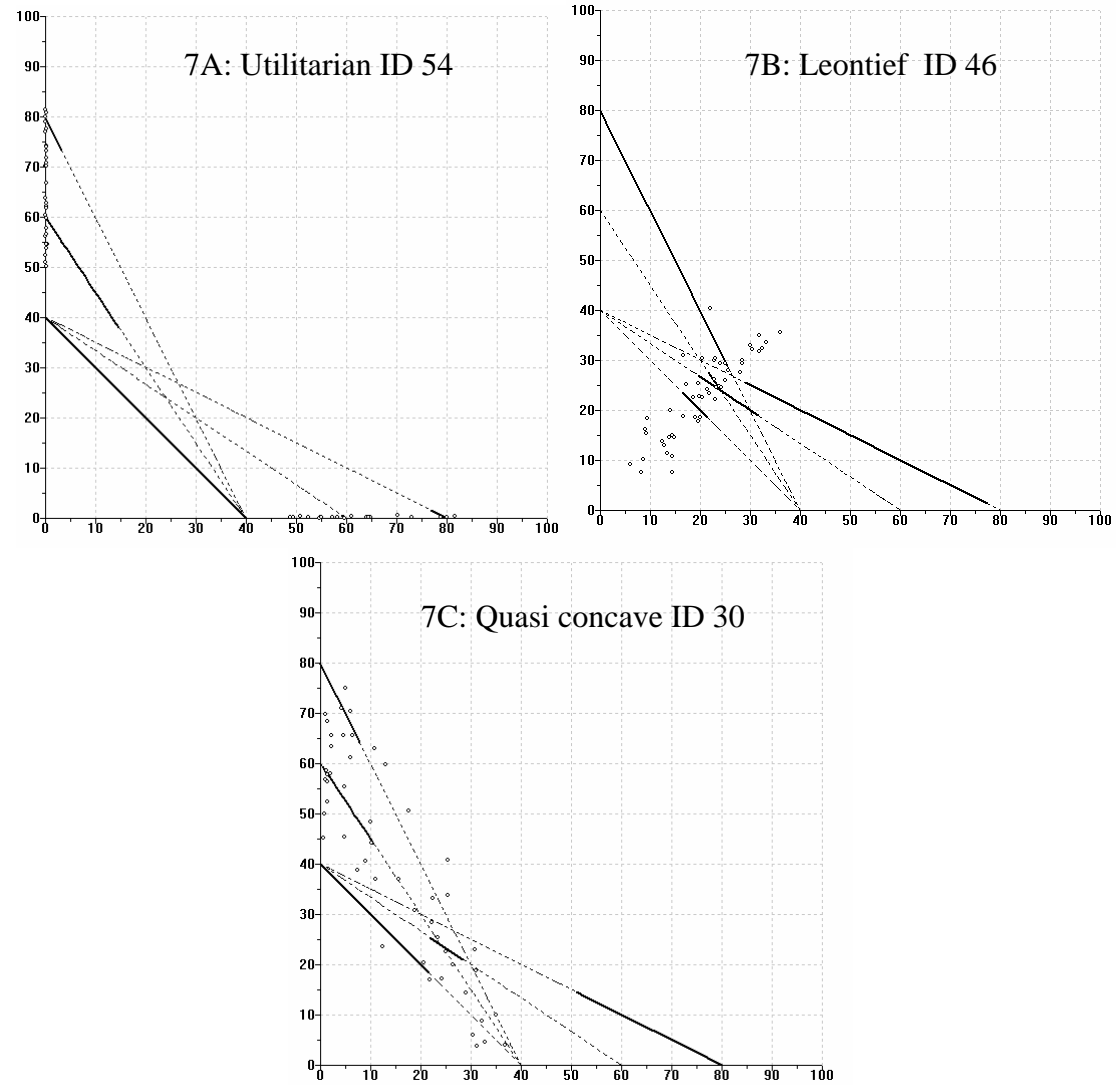


Figure 9. Scatterplot of the CES estimates

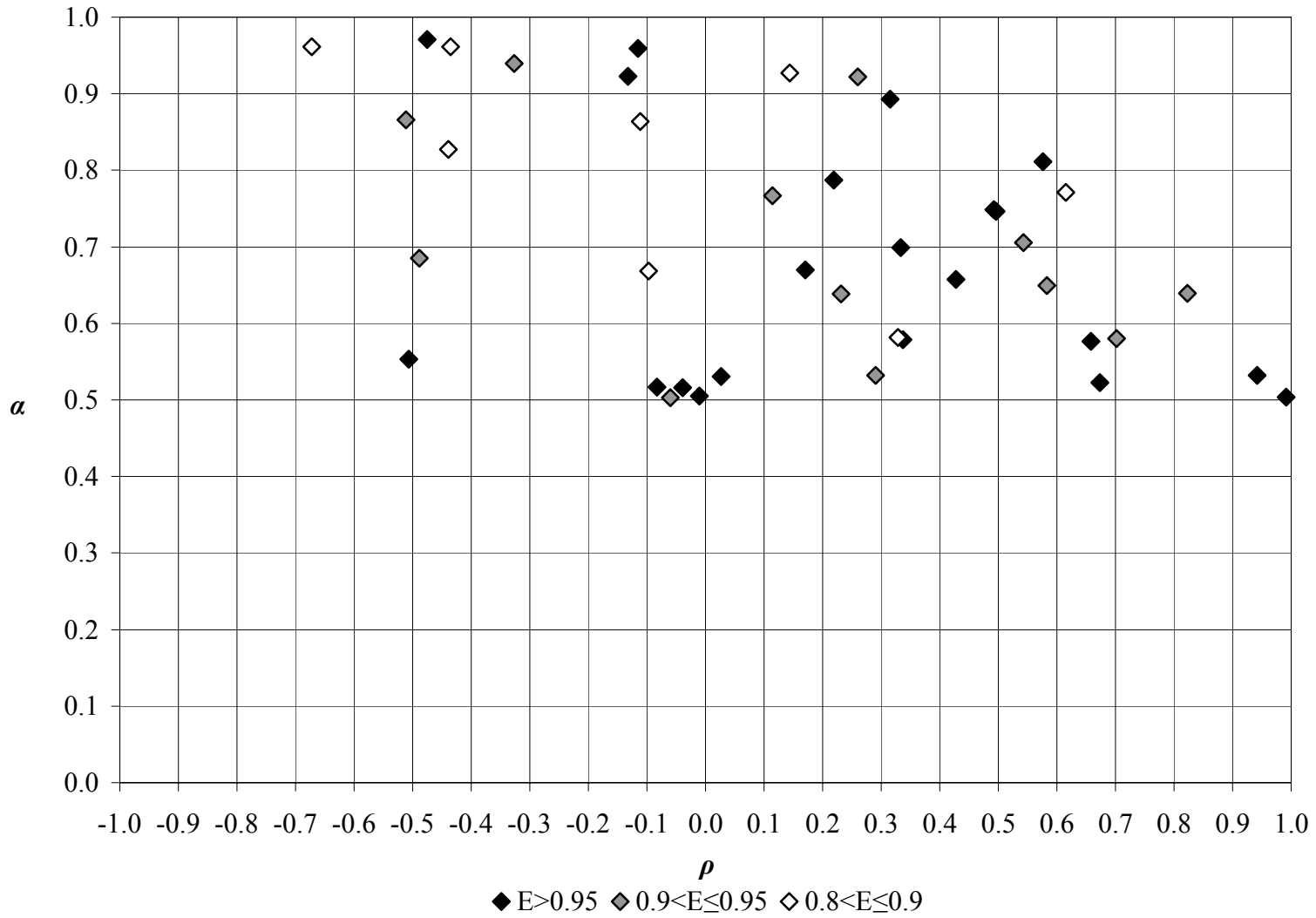


Figure 10. The distribution of the CES parameter  
(rounded to a single decimal place)

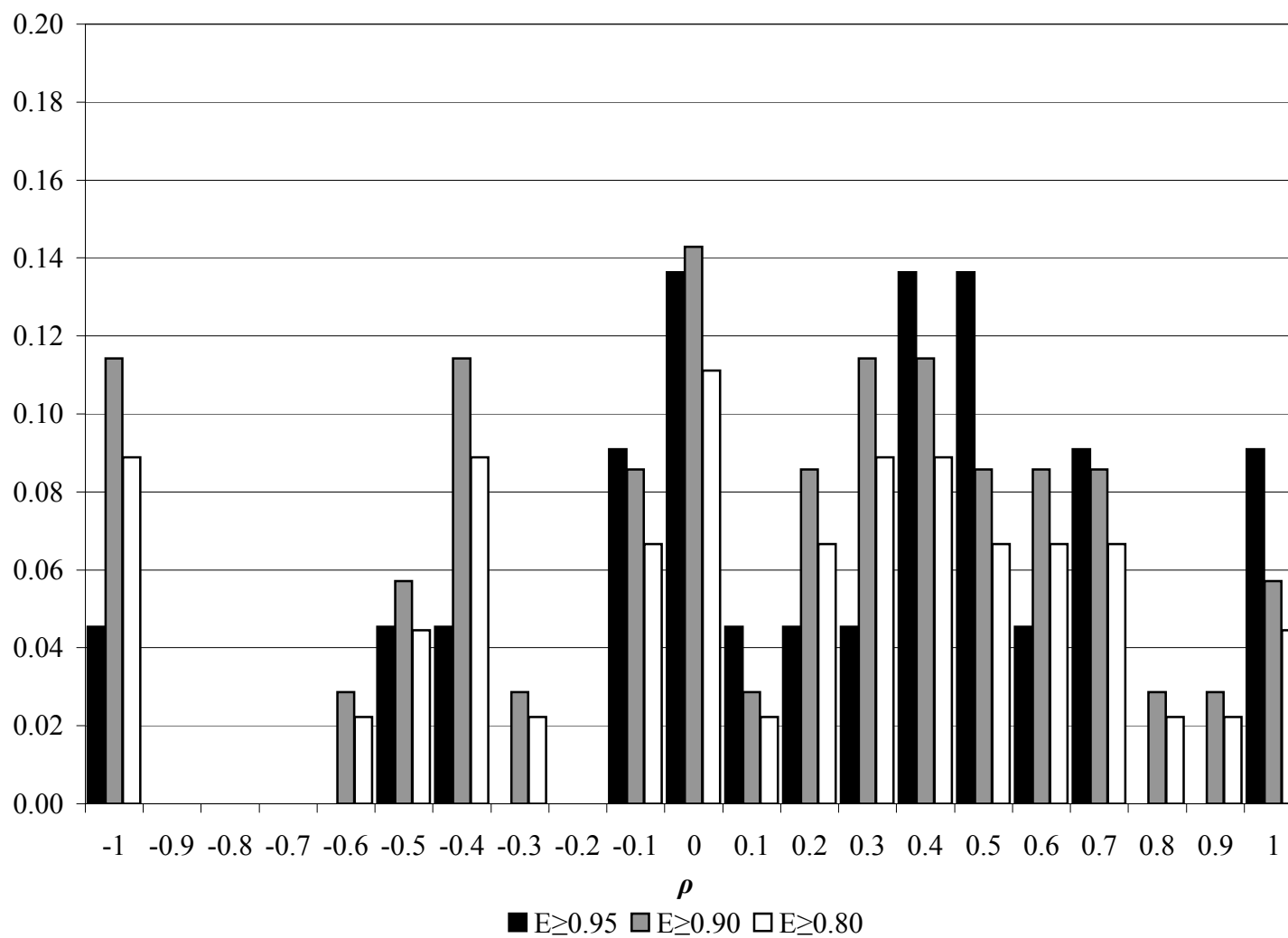


Figure 11. The estimated demand function for giving for selected subjects

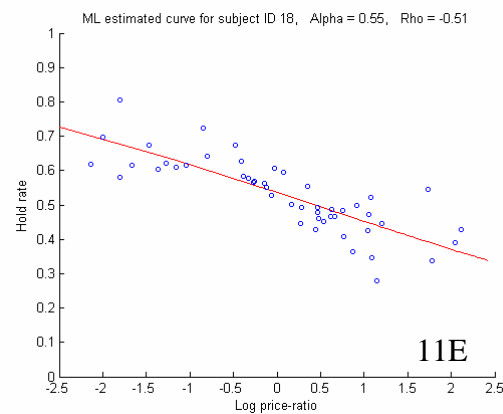
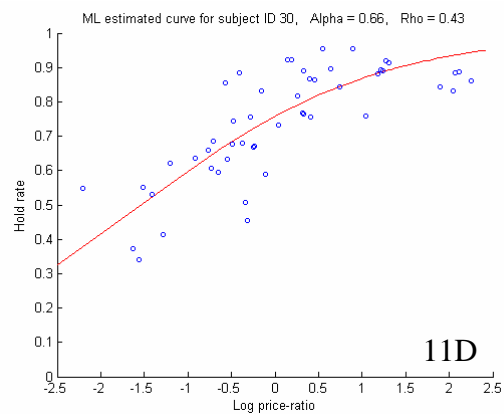
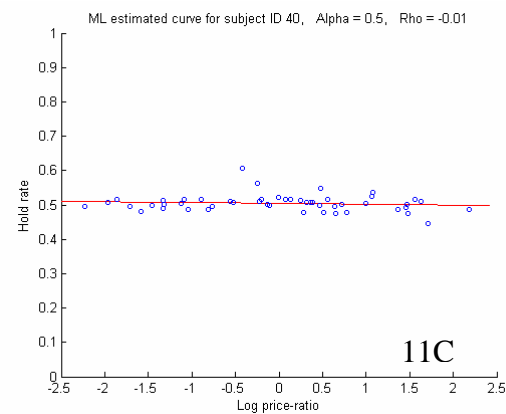
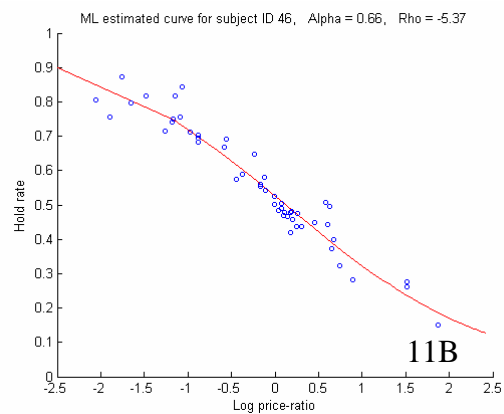
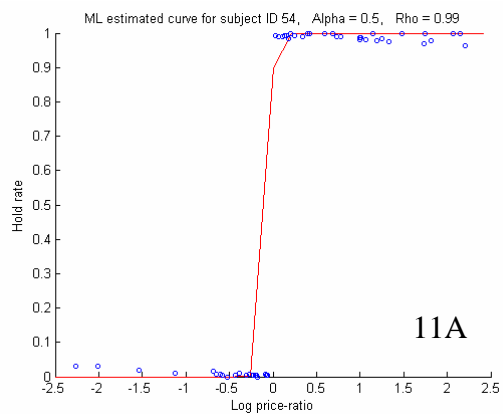


Figure 12. The estimated indirect utility function for selected subjects

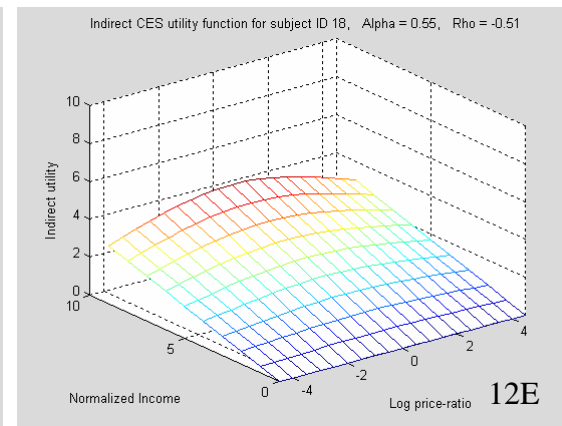
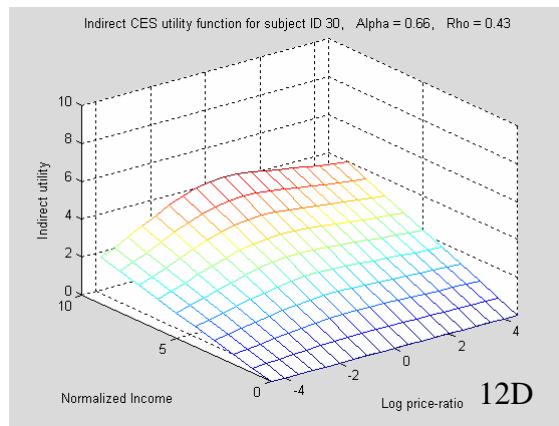
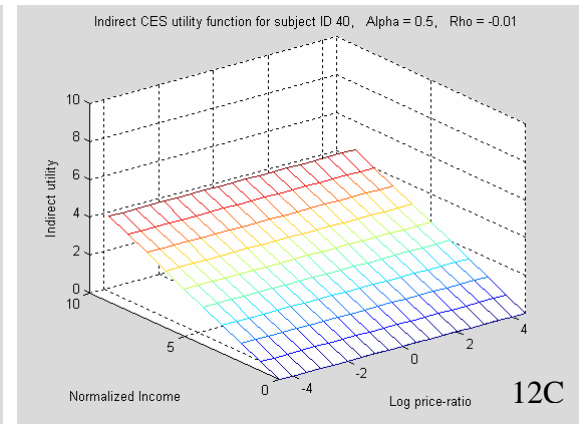
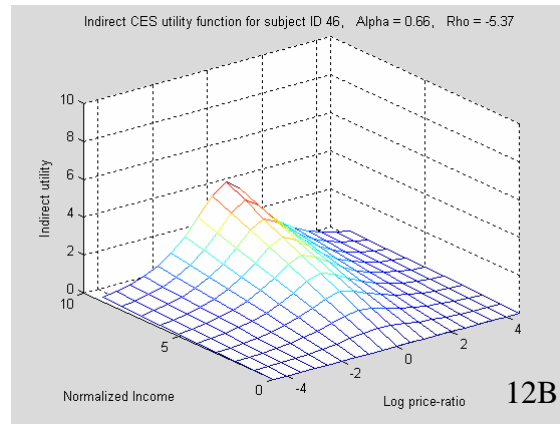
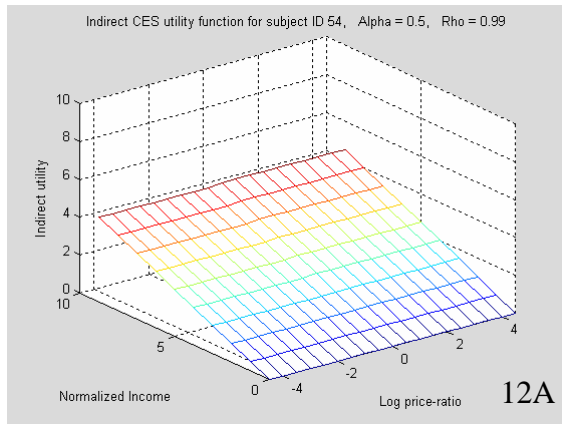


Figure 13. The effect of change in  $\log(p)$  on the indirect utility (holding  $m$  constant) for selected subjects

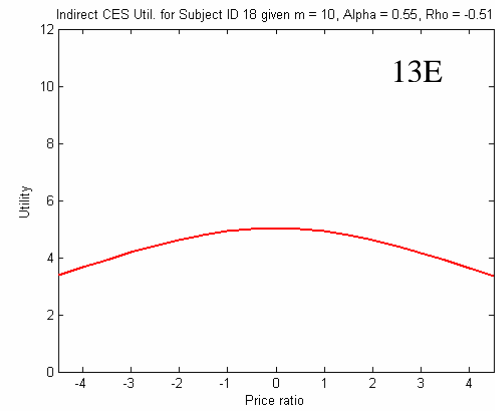
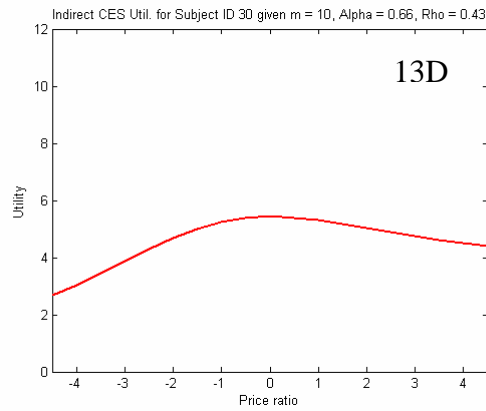
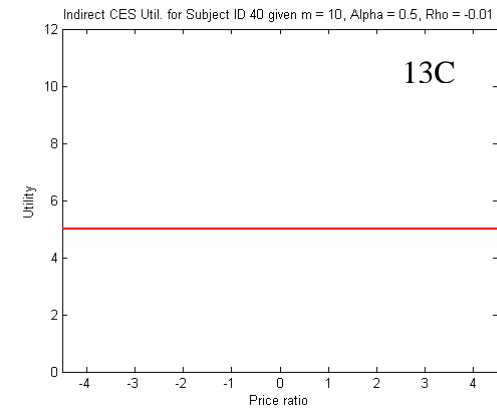
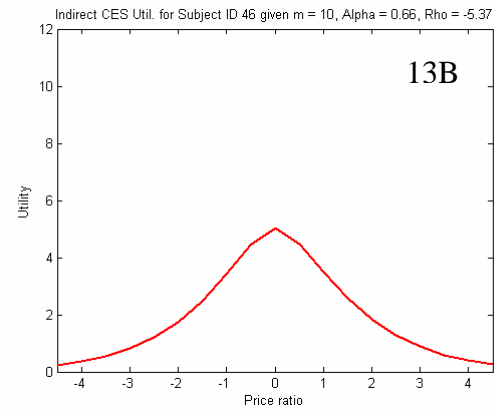
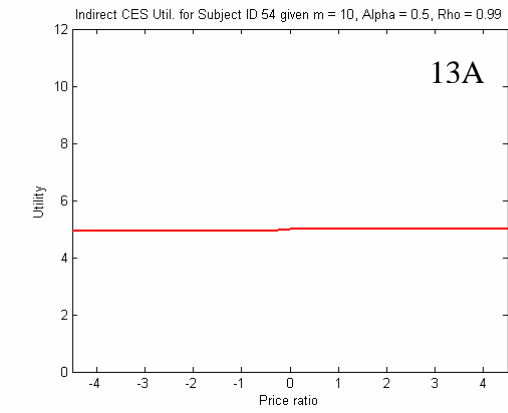
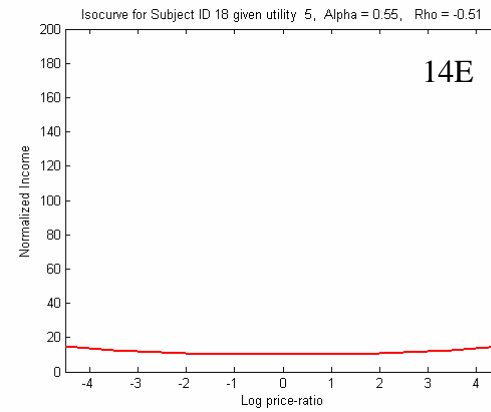
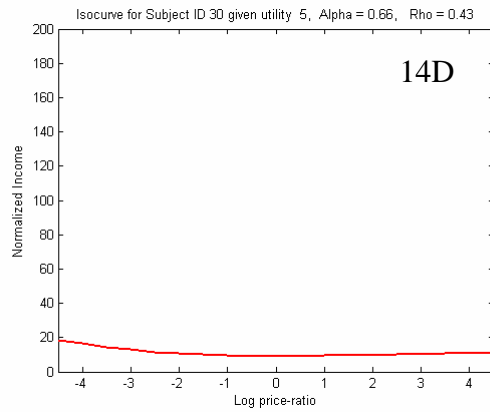
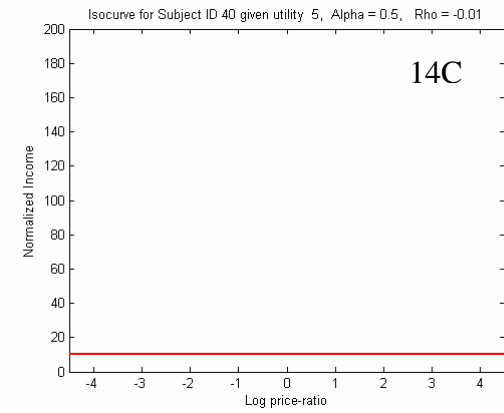
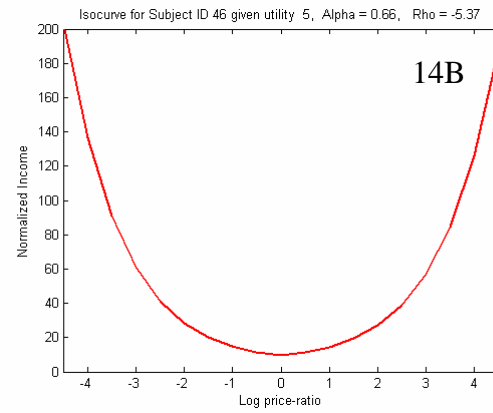
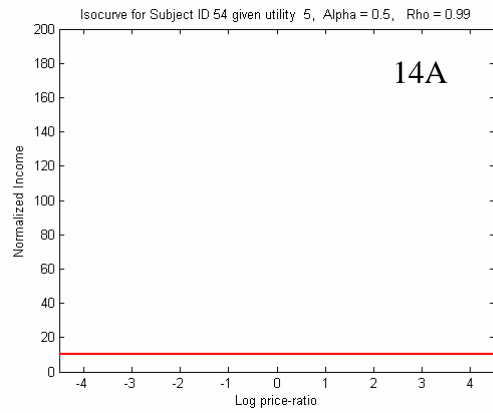
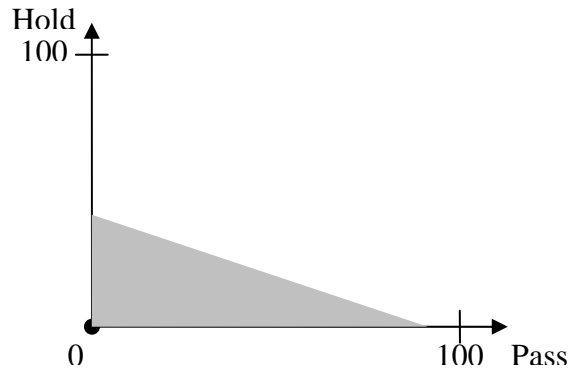
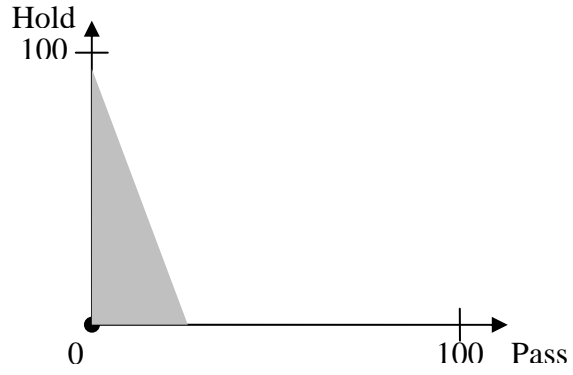
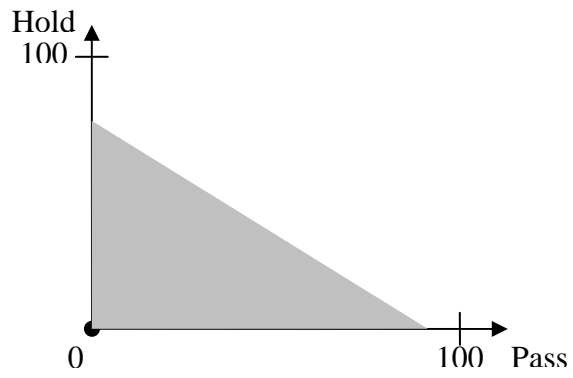


Figure 14. A typical  $(p,m)$  indifference curves for selected subjects





Attachment 1



Attachment 2

