

Is The Phillips Curve Alive and Well After All? Inflation Expectations and the Missing Disinflation

Olivier Coibion
UT Austin
and NBER

Yuriy Gorodnichenko
UC Berkeley
and NBER

This draft: September 30th, 2013

Abstract: We evaluate possible explanations for the absence of a persistent decline in inflation during the Great Recession and find commonly suggested explanations to be insufficient. We propose a new explanation for this puzzle within the context of a standard Phillips curve. If firms' inflation expectations track those of households, then the missing disinflation can be explained by the rise in their inflation expectations between 2009 and 2011. We present new econometric and survey evidence consistent with firms having similar expectations as households. The rise in household inflation expectations from 2009 to 2011 can be explained by the increase in oil prices over this time period.

JEL Codes: E3, E5

Keywords: deflation, Phillips curve, expectations

Acknowledgements: We thank Larry Ball, Mark Gertler, Andy Levin, and Troy Matheson for very helpful comments, Graham Howard for assistance with data from the Reserve Bank of New Zealand, and Saten Kumar for survey data on firms' inflation forecasts. This paper was written in part while Coibion was a visiting scholar at the IMF, whose support was greatly appreciated. The views expressed in the paper are those of the authors and should not be interpreted as representing those of any institutions with which they are or have been affiliated. Gorodnichenko thanks NSF and Sloan Foundation for financial support.

“Prior to the recent deep worldwide recession, macroeconomists of all schools took a negative relation between slack and declining inflation as an axiom. Few seem to have awakened to the recent experience as a contradiction to the axiom.”
Bob Hall (2013)

I Introduction

During the Great Depression, the United States experienced devastating levels of deflation - more than 10 percent per year in 1932. Japan was mired in borderline deflation territory from the mid-1990s through mid-2000s after its real estate and stock market bubbles popped in the early 1990s. But advanced economies have experienced little decline in inflation since the financial crisis of 2008-2009, calling into question one of the fundamental tenets of many macroeconomic theories: the Phillips curve linking the rate of change in prices to the level of economic activity.

While economists have suggested a number of possible explanations for the “missing disinflation”, we argue that these appear insufficient to explain the full extent of the inflation experience of recent years. For example, the “anchored expectations” hypothesis of Bernanke (2010)—that is, the credibility of modern central banks has convinced people that neither high inflation nor deflation are likely outcomes thereby stabilizing actual inflation outcomes through expectational effects—can only go some way in accounting for the absence of more significant disinflation between 2009 and 2011. Explanations based on recent labor market developments, such as long-term unemployed having smaller effects on wages (Llaudes 2005) or downward wage rigidity preventing wages from falling as much as in prior downturns (Daly, Hobijn and Lucking 2012), imply that the missing disinflation in prices should have been accompanied by a missing disinflation in wages, a feature which we show is noticeably absent in the data. Others have pointed to a flattening Phillips curve (IMF 2013), but the statistical evidence for this explanation is delicate, no structural changes in the economy can account for the required change in the slope of the Phillips curve, and the quantitative effects of the estimated changes in the slope are themselves insufficient to account for much of the missing disinflation. This inability to explain the missing disinflation within the context of the Phillips curve has led some to conclude that this framework may have outlived its usefulness.

We instead propose a novel explanation for the missing disinflation that remains fully within the context of traditional Phillips curve analysis. Specifically, we show that an expectations-augmented Phillips curve, using *household* inflation expectations as measured by the Michigan Survey of Consumers, can account for the absence of strong disinflationary pressures since 2009. The primary reason for the success of a household inflation expectation-augmented Phillips curve is that household inflation expectations experienced a sharp rise starting in 2009, going from a low of 2.5% to around 4% in 2013, whereas other measures of inflation expectations such as those from financial markets or professional forecasters have hovered in the close neighborhood of 2% over the same period.

Why focus on the expectations of households in the context of the Phillips curve, since the latter is meant to capture the pricing decisions, and therefore expectations, of firms? First, there is no quantitative measure of firm inflation expectations available in the U.S., so that the question of how firms form their inflation expectations, and what may be the best proxy for them, is *ex-ante* ambiguous. Given that many prices are set by small and medium-sized enterprises who do not have professional forecasters on staff (and who likely have little to gain from purchasing professional forecasting services), it seems *a priori* as likely for their inflation expectations to be well-proxied by household forecasts as by professional forecasts. Second, we present empirical evidence from estimated Phillips curves in the pre-Great Recession period that household forecasts are indeed likely to be a better proxy for firm forecasts than either professional or backward-looking forecasts. Specifically, regressions which include both household and professional forecasts systematically point to a larger role for household forecasts than any other measure of inflation expectations. Third, we present preliminary results from an ongoing survey of firms' inflation expectations in New Zealand and show that their properties are much more similar to those of households than to professional forecasts, with relatively high levels of forecasted inflation and very high dispersion of inflation forecasts across firms, in line with household forecasts but strongly at odds with professional forecasts. Thus, the available evidence is consistent with the use of household inflation forecasts as a proxy for firm forecasts of inflation in the Phillips curve.

We then consider the source of the rise in household inflation expectations relative to the forecasts of professional forecasters since 2009, which is the main feature of the data which accounts for the missing disinflation. We document that more than half of the historical differences in inflation forecasts between households and professionals can be accounted for by the level of oil prices. With oil prices having risen sharply since 2009, this provides a quantitatively successful explanation for the rise in household inflation expectations. Why would households adjust their inflation forecasts more strongly in response to oil price changes than professional forecasters? Because gasoline prices are among the most visible prices to consumers, a natural explanation could be that households pay particular attention to them when formulating their expectations of other prices. Consistent with this notion, we document using the micro-data from the Michigan Survey of Consumers that individuals who on average spend more money on gasoline (in dollar terms) and therefore frequent gas stations more often adjust their inflation forecasts by more in response to oil price changes than do individuals who spend less money on gasoline.

Our suggested explanation for the missing disinflation has several appealing properties. First, it fits naturally within the Phillips curve framework. Second, it is quantitatively successful in explaining the absence of disinflation. Third, we present new econometric and survey evidence consistent with firms' inflation expectations being well-proxied by those of households. Fourth, the difference in household inflation expectations and those of professional forecasters since 2009 can readily be accounted for by the

evolution of oil prices during this period. Finally, our explanation is consistent with the absence of strong deflationary pressures across a wide range of advanced economies since the recent financial crisis (IMF 2013), which supports explanations based on common factors such as oil price movements.

One unusual implication of our explanation is that the absence of more pronounced disinflation – or even deflation- in advanced economies following the Great Recession likely reflected a unique set of factors (e.g. rapid recoveries in developing economies like China spurring global demand for commodities, as in Kilian and Murphy 2012) which policymakers should not necessarily expect to be repeated in future crises. And to the extent that this rise in inflationary expectations may have prevented the onset of pernicious deflationary dynamics, the rise in oil prices should perhaps be interpreted as a lucky break for policymakers, generating the very rise in inflationary expectations which policymakers have only recently begun to push aggressively toward in the form of forward guidance.

A second unusual feature of this interpretation is that, contrary to Bernanke’s “anchored expectations” hypothesis, we rely on the fact that household expectations have *not* been fully anchored and continue to respond strongly to commodity price changes to explain the missing disinflation. If our explanation is correct, anchored expectations on the part of households and firms would likely have delivered much worse economic outcomes through more pronounced disinflationary dynamics. So while anchored expectations likely remain a desirable outcome in most circumstances, the experience since 2009 presents a cautionary example of the potential downside of fully anchored expectations.

Our paper builds on a long literature on the expectations-augmented Phillips curve, in the spirit of Friedman (1968). This literature has identified a number of potential issues regarding the estimation and interpretation of Phillips curve relationships. We address some of these concerns in the paper, such as the importance of using real-time expectations (Roberts 1998), the sensitivity of inflation to marginal costs (Gali and Gertler 1999), the possibility of asymmetries due to downward wage rigidities (Akerlof et al. 1996), and the sensitivity to trend inflation (Ascari and Ropele 2007). But some other concerns are not directly addressed, including the degree of price and wage indexation (Christiano, Eichenbaum and Evans 2005), the nature of pricing rigidities, such as Calvo (1983) vs. Taylor (1982) or state-dependent price setting (Dotsey, King and Wolman 2003, Gorodnichenko 2008), expectations of future outcomes vs. past expectations of current conditions (Mankiw and Reis 2002), or rule-of-thumb firms (Gali and Gertler 1999). We leave to future work a full reconciliation of our results with the wide range of issues that has been considered in this literature.

The structure of the paper is as follows. Section 2 documents the missing disinflation in the U.S. and documents its robustness to a number of specification issues. Section 3 considers potential explanations for the missing disinflation that operate through the measure of economic activity which appears in the Phillips curve. Section 4 investigates explanations involving a changing slope of the Phillips curve. Section

5 proposes our new explanation based on inflation expectations. We first document how the missing disinflation can be explained if firms hold inflation expectations similar to those of households. Second, we provide new econometric and survey evidence consistent with this assumption. Third, we document how the unusual behavior of household expectations since 2009 can be explained by the behavior of commodity prices. Section 6 concludes.

II The Missing Disinflation

One of the central tenets of macroeconomics is that the real and nominal sides of the economy are linked in part through a Phillips Curve relationship, in which inflationary pressures reflect the level of real economic activity and inflationary expectations. For example, a Friedman (1968)-type expectations-augmented Phillips curve would be written as

$$\pi_t - E_t\pi_{t+1} = c + \kappa x_t + v_t \quad (1)$$

where x is a measure of economic activity, v corresponds to cost-push shocks, c is a constant, and $E_t\pi_{t+1}$ denotes expectations of inflation. New Keynesian models a la Clarida, Gali and Gertler (1999) or Woodford (2003) provide micro-foundations for such a relationship through the presence of rigidities in price-setting decisions. In these models, the relevant measure of economic activity would be marginal costs, which in turn are related to broader measures of economic activity such as the output gap. Shocks to the Phillips curve can come from e.g. time-variation in desired mark-ups.

Regardless of the specific formulation of the Phillips curve, the two key characteristics of modern Phillips curves are the role of inflation expectations and the negative relationship between economic slack and inflationary pressures. To characterize the average relationship between inflation and economic activity, we primarily focus on the unemployment rate to characterize the strength of economic activity because it is both a simple and transparent metric and does not require us to take a strong stand on the nature of trends, e.g. in productivity. For now, we follow Ball and Mazumder (2011) and assume as a simple baseline that expectations of future inflation are backward-looking and can be approximated by the average of the previous four quarters' inflation rates:

$$E_t\pi_{t+1} = \frac{1}{4}(\pi_{t-1} + \pi_{t-2} + \pi_{t-3} + \pi_{t-4}). \quad (2)$$

We discuss the sensitivity of our results to alternative measures of economic activity and expectations in subsequent sections.

In Panel A of Figure 1, we present a scatter plot of quarterly unemployment rates for the U.S. against the deviations of inflation that quarter from expected inflation, using the (seasonally adjusted) Consumer Price Index (CPI) as the measure of inflation. Data from 1960Q1-2007Q3 is represented by blue circles, and the blue line represents the slope of the average relationship between unemployment and inflation surprises over time. As expected, this slope is negative, indicating that periods of high

unemployment have, on average, been associated with inflation falling below expectations. This relationship is statistically significant at the 1% level and the R^2 of the regression is 0.13, indicating that the link between economic slack and inflation (conditioning on expectations) has historically been quite strong.

The figure also includes more recent observations for inflation during the Great Recession (red, filled circles). While some of the observations are close to the regression line, there is a disproportionate amount of observations in the far upper-right part of the graph, pointing to many quarters when inflation was well-above what might have been expected given the severity of the economic downturn. This occurred almost continuously from the second quarter of 2009 until the third quarter of 2011, when deviations of inflation from expected inflation (“inflation surprises”) finally declined to levels in line with historical relationships. This translates into a period of approximately two years when inflation surprises were systematically larger than one would have expected from historical patterns.

In Panel B of Figure 1, we plot the time series of actual and predicted CPI inflation given the actual time paths of unemployment and expected inflation since the start of the Great Recession. Specifically, we use equation (1) estimated on the 1960Q1-2007Q3 sample to calculate predicted inflation as $\hat{\pi}_t = E_t\pi_{t+1} + \hat{c} + \hat{\kappa}UE_t$.¹ Since 2009, CPI inflation has consistently averaged around a 2% annual rate after the abrupt transitory decline in the fourth quarter of 2008 when oil and commodity prices fell dramatically.² In contrast, predicted inflation fell below 0% in the first quarter of 2009, as the unemployment rate moved above 8%, and would have averaged below zero into 2011 had the historical relationship between unemployment and inflation held throughout this period. Thus, the size of the downturn should have pushed the U.S. well into a deflationary environment.

In Figure 2, we illustrate the robustness of the missing disinflation to a number of factors. First, the absence of disinflation is not unique to the CPI: Panels A and B plot equivalent results using the Personal Consumption Expenditures (PCE) price index and the GDP deflator respectively and both yield the same qualitative pattern of unusually high inflation relative to expectations from 2009 to 2011. Thus, while the magnitude of the missing disinflation is somewhat sensitive to the specific inflation measure used, the qualitative nature of the result, namely that inflation would have been expected to decline significantly more relative to expectations given the severity of the slump, is robust to alternative inflation measures. Second, the missing disinflation is also visible using core rather than headline measures of inflation. Panels C and D reproduce our baseline figure for core CPI and core PCE price indices respectively. The same

¹ Since expectations are backward looking, we could in principle calculate dynamic inflation expectations, that is, feed predicted values from equation (1) into equation (2) and then back to equation (1). However, we will later use forward-looking expectations from surveys of consumers and professional forecasters for which we cannot generate dynamic predictions. To keep the series of predicted inflation consistent across different measures of inflation expectations, we use static (i.e. actual) inflation expectations in all exercises.

² Note that because the decline in inflation in 2008Q4 was so abrupt, it led to a very large negative inflation surprise at an annualized rate which makes it off-the-chart in Panel A of Figure 1.

qualitative pattern emerges, with inflation from 2009 to 2011 being well-above what historical patterns would have predicted.

We also consider whether the missing disinflation is sensitive to the treatment of inflation expectations. While our baseline approach relies on backward-looking expectations, modern macroeconomic models typically assume that agents have access to significantly more information than in our baseline. To see whether the missing inflation is robust to forward-looking measures of expectations, we use the Survey of Professional Forecasters (SPF) median forecast of CPI inflation over the next four quarters in place of backward-looking expectations. Because SPF forecasts of the CPI are only available starting in 1981Q1, our sample is more restricted than in the baseline. But as illustrated in Panel E of Figure 2, the results are again qualitatively similar to the baseline case: from 2009 to 2011, inflation was significantly above what one would have expected given inflation expectations and the severity of the economic downturn. The magnitude of the missing disinflation remains very large: U.S. inflation economy would have been expected to average around 0% from 2009 to 2011. The fact that missing disinflation remains a feature of the data even conditioning on professional forecasts is striking. One of the most common explanations mentioned for the absence of disinflation in the U.S. is the hypothesis that expectations are now “well-anchored” thereby preventing significant swings in inflation (see e.g. the IMF’s World Economic Outlook 2013). But even if we condition on the real-time “anchored” expectations of professional forecasters, we find the same pattern of unusually high inflation during the Great Recession. Hence, this strongly suggests that the anchoring of expectations is *not* the principle source of the missing disinflation in the U.S.

Another possibility is that inflation dynamics during this period were unduly affected by shocks. In particular, one might consider that oil and commodity price movements during this period pushed inflation up despite the weak economy. The price of West Texas Intermediate (WTI) crude, for example, went from under 40\$ per barrel in early 2009 to over \$100 per barrel in early 2011, precisely the period during which inflation was significantly higher than expected from historical Phillips curve correlations. To assess whether changing oil prices can account for the unusual inflation dynamics during this period via shifts in the Phillips curve, we regress inflation surprises on contemporaneous (log) oil price changes using pre-Great Recession data as well as unemployment rates on oil price changes and plot the orthogonalized components of both unemployment and inflation surprises in Panel F of Figure 2. We also orthogonalize observations since 2007Q4 using pre-Great Recession regressions and include them in the Figure. The results are almost identical to our baseline findings: inflation continues to be unusually high relative to expectations and the level of economic activity from 2009 through 2011. Thus, there is also little evidence that commodity price shocks during this period can account for the missing disinflation through transitory shifts in the expectations-augmented Phillips curve.

In short, inflation dynamics during the Great Recession do indeed appear to be quite puzzling relative to historical patterns as characterized by a standard Phillips curve. Does this mean that we should be prepared to jettison the Phillips curve as a theoretical framework for understanding the link between nominal and real economic variables? To answer this question, we consider three broad classes of potential explanations for the missing disinflation that remain within the context of the Phillips curve. First, one possible interpretation is that the unemployment rate mismeasures the relevant real forces driving inflation. This could be the case, for example, if the natural rate of unemployment had gone up significantly during this period or if the unemployment rate has become less closely tied to marginal costs than in the past. Second, the slope of the Phillips curve may have declined over time due to changing structural characteristics of the U.S. economy. Third, the inflation expectations of firms could be mismeasured. We address each of these potential explanations in turn.³

III Measuring Inflationary Pressures

A central element of any analysis based on the Phillips curve is the measurement of real economic activity, i.e. how we define the variable which is assumed to be responsible for generating (dis)inflationary pressures. While we have relied on the level of the unemployment rate in our baseline scenario, there are several reasons to be wary of this approach. First, one might expect the relevant measure of unemployment to be the deviation of unemployment from the natural rate of unemployment. But the latter is unobservable. So one could either separately estimate the natural rate and incorporate it into the estimation of the Phillips curve or alternatively one could use the Phillips curve to back out what the natural rate of unemployment must have been to be consistent with observed inflation dynamics. We consider both approaches in section 3.1 and discuss their implications for the missing disinflation. Second, New Keynesian models suggest that marginal costs are the relevant source of inflationary pressures, and the mapping from these to unemployment may be indirect or varying over time. We address this possibility in section 3.2.

3.1 The Missing Disinflation and the Natural Rate of Unemployment

Could the missing disinflation be explained through changes in the natural rate of unemployment? If the natural rate of unemployment varies over time, our baseline treatment of the Phillips curve could be mismeasuring inflationary pressures during the Great Recession in two ways. First, historical variation in the natural rate of unemployment prior to the Great Recession could lead to biased estimates of the slope of the Phillips curve, thereby distorting our estimates of the amount of missing disinflation. Secondly,

³ Another possibility is that inflation is becoming increasingly cyclically mismeasured. Coibion, Gorodnichenko and Hong (2013) propose one mechanism pushing in this direction: the reallocation of household expenditures across retailers. Unfortunately, data limitations prevent us from quantifying whether cyclical mismeasurement issues have become more pronounced over time.

variation in the natural rate of unemployment during the Great Recession would lead us to mismeasure the pressures on price setting arising from real economic activity and therefore the degree of missing disinflation.

To address these possibilities, we first assume that the natural rate of unemployment is observable, and use the estimate of the short-term natural rate of unemployment (UE_t^n) constructed by the Congressional Budget Office (CBO). We then construct unemployment gaps as the quarterly deviation of unemployment from the natural rate ($UE_t^{gap} = UE_t - UE_t^n$) and treat this as the relevant forcing variable in the Phillips curve

$$\pi_t - E_t\pi_{t+1} = c + \kappa UE_t^{gap} + v_t. \quad (3)$$

CBO estimates of the natural rate of unemployment are available since 1949, so we can reproduce our baseline Phillips curve relationship replacing unemployment rates with unemployment gaps. This is plotted in Panel A of Figure 3. Focusing first on the pre-Great Recession period, we find that using the unemployment gap has no material effect on the estimated slope—if anything the slope gets steeper—and it improves the fit of the regression substantially, with the R^2 rising to 0.15 from 0.13. But the absence of any meaningful change in the estimated slope of the Phillips curve implies that pre-Great Recession variation in the natural rate of unemployment does not have much effect on the degree of the missing disinflation. Furthermore, because the CBO estimate of the natural rate of unemployment goes up only one percentage point over the course of the Great Recession, inflation from 2009 to 2011 continues to stand out as puzzlingly high relative to the rate of economic activity during this time period. Hence, incorporating time variation in the natural rate of unemployment improves the historical fit of the Phillips curve but does not meaningfully change the amount of missing disinflation.

How much would the natural rate of unemployment need to have changed during the Great Recession to account for the missing disinflation? One can use the estimated Phillips curve to solve for the evolution of the natural rate of unemployment needed to account for inflation dynamics (under the assumption of no shocks to the Phillips curve over this time period). We implement this idea and plot the resulting estimate of the natural rate of unemployment from 2007 on, along with 95% confidence intervals, in Panel B of Figure 3.⁴ For comparison, we also plot the CBO estimate of the natural rate as well as the actual level of unemployment over the corresponding period. The result is striking: to account for the missing disinflation, the natural rate of unemployment would have needed to track actual unemployment

⁴ For this exercise only, we estimate the slope of the Phillips curve putting unemployment on the left hand side and inflation surprises on the right hand side. Using our original estimate of the slope of the Phillips curve yields even larger implied movements in the natural rate of unemployment.

very closely over the entire period of the Great Recession, implying that essentially all of the unemployment dynamics during the Great Recession must have been structural.⁵

We interpret the dynamics of the natural rate of unemployment needed to account for the missing disinflation as being too at odds with other empirical evidence to treat this as a plausible explanation. Elsy, Hobijn, and Sahin (2010), Daly et al. (2012) and others use employment/unemployment flows to study whether the natural rate of unemployment has changed since the start of the Great Recession and to what extent mismatch contributes to persistent unemployment. In a nutshell, this literature points to a rise in the natural rate of unemployment with an upper bound of 1-1.5%, broadly in line with the CBO estimates. As illustrated in Panel A of Figure 3, this kind of variation in the natural rate of unemployment is too small to change the conclusion that inflation was significantly higher between 2009 and 2011 than what would have been expected from the previous historical experience.

3.2 Marginal Costs and the Missing Disinflation

An alternative explanation for the missing disinflation is that inflation is tied to marginal costs which have behaved unusually during the recent period, thereby driving inflation dynamics. For example, New Keynesian models a la Woodford (2003) or Clarida, Gali and Gertler (1999) yield expectations-augmented Phillips curves in which marginal costs are the relevant forcing variables. While it is common in these models to use labor's share as a proxy for marginal costs (e.g. Gali and Gertler 1999), this measure has become increasingly problematic over time. First, labor's share of income has experienced a pronounced decline since the 1980s (Karabarbounis and Neiman 2013). If one takes labor share as the appropriate measure of marginal costs, this decline should have led to massive disinflationary pressures and, hence, the magnitude of the missing disinflation would have been even more striking. However, King and Watson (2012) document that recent movements in the labor share are largely due to low frequency variation which makes using labor share (or unit labor cost) a poor proxy for the cyclical dynamics of marginal costs. Second, there is likely to be significant mismeasurement of marginal costs because of the treatment of the self-employed in the construction of labor's share. Elsy, Hobijn and Sahin (2013) argue, for example, that approximately one-third of the recent decline in labor's share can be attributed to mismeasurement of the wage income of the self-employed. They also argue that these measurement issues make labor's share a poor proxy for the cyclical variation in marginal costs.

To get around this issue, we focus primarily on the behavior of wages during the Great Recession to ascertain whether marginal costs have behaved unusually during this period. Since the recent dynamics of total factor productivity and labor productivity have been consistent with their behavior during other

⁵ This is not true by definition in an expectations-augmented Phillips curve, since changes in the unemployment gap affect the deviations of inflation from expected inflation, not just the level of inflation.

downturns (Fernald 2012), focusing on wages should be sufficient to isolate any unusual behavior in marginal costs.

There are several mechanisms which could lead one to think that the missing disinflation can be explained through unusual wage patterns. First, the share of the long-term unemployed has been unusually high during the Great Recession relative to previous downturns (Coibion, Gorodnichenko and Koustas 2013). If the long-term unemployed have less pronounced effects on wage pressures than the short-term unemployed (as suggested in Aaronson et al. 2010), then one could potentially explain the absence of significant price disinflation through an absence of wage disinflation. A second mechanism is through downward nominal wage rigidity. Falling levels of inflation since the early 1980s have also lowered average nominal wage changes, so that an increasing share of workers appears to be experiencing zero wage changes each year, i.e. wage adjustment is increasingly constrained by downward wage rigidity (Daly et al. 2012). Again, this mechanism could explain the absence of price disinflation during the Great Recession through an absence of wage disinflation.

Was the Great Recession also characterized by a missing wage disinflation, as suggested by both of these mechanisms? Building on Coibion, Gorodnichenko and Koustas (2013), we address this question by looking at wage Phillips curves of the same form as the price Phillips curve of section 2. Specifically, we regress quarterly wage inflation (π_t^w) net of expectations of wage growth on unemployment rates

$$\pi_t^w - E_t \pi_{t+1}^w = c + \delta U E_t + error_t \quad (4)$$

using pre-Great Recession data to determine whether the experience during the Great Recession was unusual. We first consider backward-looking specifications of expectations, assuming $E_t \pi_{t+1}^w = \frac{1}{4}(\pi_{t-1}^w + \pi_{t-2}^w + \pi_{t-3}^w + \pi_{t-4}^w)$. Because of the inherent difficulty of measuring wages, we consider multiple measures of wage inflation. First is average hourly earnings of manufacturing workers. This measure is narrow in its scope but likely reduces the measurement error associated with wages. Second is compensation per hour in the non-farm business sector. In Panels A and B of Figure 4, we plot unemployment against wage inflation net of expectations for each measure of wages respectively, along with the implied slope of the wage Phillips curve during the pre-Great Recession period. We split this sample into two (1960-1985 and 1986-2007) to assess whether the slopes are sensitive to the sample. In each case, we find negative relationships between unemployment and wage inflation net of expectations with no evidence of instability in these relationships over time. We then plot the corresponding values since the start of the Great Recession. In each case, observations are distributed evenly around the predicted values from the pre-Great Recession period. Thus, we find no evidence of a missing wage disinflation during the Great Recession.

To assess whether this is robust to assumptions about expectations of wage inflation, we consider a third measure of compensation: weekly manufacturing earnings. This measure is useful because real-time

forecasts of wage inflation are available for this series from the Livingston Survey of Forecasters. The latter is a semi-annual survey in which forecasters were asked to predict the level of weekly manufacturing earnings six months and twelve months ahead. From this survey, we can construct the expected wage inflation over that six month period (i.e. $E_t \pi_{t+2}^w$ at the semi-annual frequency). We present the resulting semi-annual deviations of wage inflation from expected wage inflation against semi-annual unemployment from 1960S1 to 2007S2 in Panel C of Figure 4. As with the two other measures of wage inflation, we find that the slope of the wage Phillips curve appears to have been stable across the pre-Great Recession sample and that wage outcomes during the Great Recession period are fully in line with what the earlier historical experience would have led one to expect.

In short, using different measures of wages and either backward or forward looking expectations, we find no evidence of missing wage disinflation during the Great Recession. This implies that one cannot explain the missing price disinflation by appealing to mechanisms which rely on unusual wage dynamics during the Great Recession, such as downward wage rigidity or differential wage pressures associated with the long-term unemployed. Combined with the absence of unusual productivity dynamics documented in Fernald (2012), these results imply that marginal costs are unlikely to have displayed unusual cyclical dynamics during the Great Recession and therefore that the explanation for the missing disinflation does not stem from unusually high costs but rather from the pricing decisions of firms conditional on typical cyclical cost patterns.

IV The Slope of the Phillips Curve

A second class of explanations for the missing disinflation is that the slope of the Phillips curve has declined over time, so that the historical relationship between the level of real economic activity and inflation may be a misleading guide to recent inflation dynamics. In this section, we first investigate the extent to which the slope of the Phillips curve may have changed, then turn to considering whether changes in the structure of the U.S. economy can potentially explain time variation in the estimated slope of the Phillips curve, and finally assess the quantitative importance of the declining slope of the Phillips curve in accounting for missing disinflation.

4.1 Has the Slope of the Phillips Curve Changed?

In Panels A and B of Figure 5, we consider the average relationship between unemployment and deviations of inflation from expectations for two separate sub-periods: 1960-1985 and 1986-2007, using backward and forward looking expectations respectively. In each case, and consistent with Coibion, Gorodnichenko and Koustas (2013), we can observe an apparent flattening of the slope of the Phillips curve. Hence, it

appears plausible that a flattening of the Phillips curve could potentially explain some of the missing disinflation.

We investigate the statistical evidence for a change in the slope of the Phillips curve more formally by allowing for a break in the slope of the Phillips curve in 1985Q1 as follows:

$$\pi_t - E_t\pi_{t+1} = c + \kappa \times UE_t^{gap} + \gamma \times UE_t^{gap} \times I_{\geq 85,t} + \theta \times I_{\geq 85,t} + error_t \quad (5)$$

where $I_{\geq 85,t}$ is a dummy variable equal to one for periods from 1985Q1 to 2007Q3 and zero prior to 1985. The interaction of this dummy variable with the unemployment gap (γ) allows us to assess whether the slope of the Phillips curve changed around this period.

We report results from estimating this specification in Table 1 for several cases: CPI inflation and backward-looking expectations, GDP deflator inflation and backward-looking expectations, and GDP deflator inflation with forward-looking (SPF) expectations.⁶ In each case, we estimate the Phillips curve both by OLS as well as by IV, using as instruments a constant, one lag of unemployment, the dummy variable for post-84 periods, and the interaction of the dummy with the lag of unemployment.

The point estimates on the interaction term are always positive, so that the Phillips curve consistently appears to have flattened since the mid-1980s. However, the statistical significance of this effect varies by specification: we cannot reject the null of no change in slope using the CPI but can reject the null at least at the 5% level for all specifications with the GDP deflator, with almost no difference between OLS and IV estimates in any case. Thus the evidence for a change in the slope is mixed. What is consistent across specifications, however, is that the change in the slope (if there was one) was relatively large: on the order of a 60-80% reduction in most specifications. Furthermore, we cannot reject the null that the slope of the Phillips curve since 1985 was zero, pointing to a weak link between real and nominal economic activity during this period, consistent with Atkeson and Ohanian (2001). The absence of conclusive empirical evidence on a changing slope of the Phillips curve is problematic if this is the underlying cause of the missing disinflation. So in the next section, we consider whether changes in the structural parameters which determine the slope of the Phillips curve can potentially account for the magnitudes of a change in slope needed to explain the missing disinflation.

4.2 Can Structural Changes Account for a Changing Slope of the Phillips Curve?

When the Phillips Curve is expressed in terms of employment, the slope of the New Keynesian Phillips Curve (NKPC) in the basic model (e.g., Gali 2008; one input, perfectly mobile labor; capital is fixed and normalized to be equal to one) is given by

⁶ We use GDP deflator inflation forecasts from the SPF because projections for the GNP/GDP deflator have been collected by the SPF since 1968 while CPI inflation projections have been collected by the SPF only since 1981. The short time series of the CPI projections in the SPF makes the analysis of structural breaks problematic.

$$\kappa = \frac{(1-\lambda)(1-\beta\lambda)}{\lambda} \times \frac{\alpha}{\alpha+(1-\alpha)\theta} \times \left(\sigma + \frac{\phi+1-\alpha}{\alpha} \right) \times \alpha \quad (6)$$

where λ is the frequency of price changes, β is the time discount factor, θ is the elasticity of substitution across varieties, ϕ is the Frisch labor supply elasticity, α is the elasticity of output with respect to labor share, $1/\sigma$ is the intertemporal elasticity of substitution. For a baseline, we use $\alpha = 0.66$, $\beta = 0.99$, $\lambda = 0.75$, $\theta = 10$, $\sigma = 2$, and $\phi = 2$, which are all standard values.

To the best of our knowledge, there is little reason to think that fundamental parameters such as time preference, the intertemporal elasticity of substitution, and the labor supply elasticity have changed since the early 1980s. In addition, these parameters are remarkably hard to recover from macroeconomic time series. Thus, we do not attempt to quantify any time variation in these parameters. Instead, we focus on three more likely potential sources of changes in the slope of the NKPC: the decline in labor's share in the U.S., a rise in the share of profits (which can be interpreted as increase in markups and hence a decrease in θ), and a declining frequency of price changes.^{7,8}

We focus on these three characteristics because each has experienced persistent changes since at least the early 1980s. For example, labor's share of income (nonfarm business sector) has fallen by 13 percent between 2000 and 2013. Elsby, Hobijn and Sahin (2013) argue that approximately one-third of this decline is measurement error due to the treatment of self-employed income, so a reasonable estimate is that labor's share has fallen by less than 10 percent. The share of profits has risen from 6% before 2000 to 9% after 2005, approximately 50% increase.

Using these dynamics, we can provide a rough sense of how the slope of the NKPC moved in response to changes in these parameters. A decrease in the labor share is consistent with a fall in the slope of the Phillips curve. Using the slope of the basic NKPC described in equation (6), one can find that a 10% decrease in the labor share is likely to decrease κ by 10 to 15 percent. For profits, note that in the New Keynesian model, the share of profits in sales is $1/(\theta - 1)$. Hence, one can consider that θ fell by about 20-30 percent ($\theta_{new} = 1 + (\theta_0 - 1)/1.5$). With this decrease in θ , one can expect a 20-30 percent increase in κ . So changes in profits and labor share should have roughly offset each other in terms of changing the slope of the Phillips curve.

Nakamura and Steinsson (2008) report that the frequency of price changes has been somewhat decreasing over time. An upper bound estimate of the decrease in the frequency of price changes could be that the frequency fell from 0.09 per month (or approx. 0.25 per quarter) in late 1980s to 0.06 per month

⁷ Another potential cause of a flattening Phillips curve is the rising share of trade in the U.S. economy. Erceg, Gust and Lopez-Salido (2007) find that while rising trade shares do lead to a flattening of the Phillips curve, the quantitative effects for the U.S. are very small for reasonable values of the Frisch elasticity. Hence, this mechanism cannot quantitatively explain a large change in the slope of the Phillips curve.

⁸ Time series are shown in Appendix Figure 1.

(or approx. 0.17 per quarter) in early 2000s. With this magnitude of a decrease, one can expect κ to fall by as much as 50 percent. But other evidence such as Klenow and Kryvtsov (2008) documents almost no variation in the frequency of price changes from 1988 to 2004, so the contribution of a changing frequency of price setting is unlikely to be anywhere near this large. Thus, a declining frequency of price changes may have led to some flattening of the Phillips curve, but it is very unlikely to generate the kind of flattening suggested by the estimates of Table 1.

Another possible source of a flattening Phillips curve is the decline in trend inflation since the highs of the 1970s. While our baseline Phillips curve follows from New Keynesian models log-linearized around zero trend inflation, incorporating positive levels of inflation yields a more complex expression for inflation dynamics in which inflation becomes increasingly forward-looking at higher levels of steady-state inflation (Ascari and Ropele 2007, Coibion and Gorodnichenko 2010). Thus, the decline in inflation since the 1970s could have led to a flatter reduced-form Phillips curve relationship between inflation surprises and real activity through this alternative channel. To quantify this possibility, we simulate the calibrated New Keynesian model of Coibion, Gorodnichenko and Wieland (2012) at different steady state levels of inflation and evaluate the extent to which changes in steady-state inflation affect the slope of the reduced form Phillips curve. We find that plausible reductions in steady-state inflation (e.g. from 6% to 2% per year) have very little effect on the slope of this relationship, accounting for less than a 10% decline. Thus, this mechanism also cannot account for the magnitude of the decline in the Phillips curve suggested in Table 1.

4.3 Can a Changing Slope of the Phillips Curve Account for the Missing Disinflation?

The empirical evidence on whether the slope of the Phillips curve has changed is mixed, with some estimates of the Phillips curve rejecting stability while others not. Furthermore, we cannot identify any clear economic mechanism to explain the magnitude of empirical estimates of the change in the slope of the Phillips curve. We now consider whether, if we take the estimates of the change in slope at face value, the declining slope can account for the missing disinflation.

Specifically, we produce counterfactual time paths of inflation during the Great Recession based on both the full-sample estimates of the Phillips curve as well as the restricted sample estimates from the more recent period. We do so for CPI inflation using either backward-looking or SPF expectations. The results are presented in Panel C of Figure 5. We find modest effects from changes in the slope. With backward-looking expectations, the average inflation rate over the sample is higher by approximately 1%, but this leaves most of the missing disinflation unexplained. With SPF expectations, the change in slope raises average inflation during the Great Recession by approximately 0.5%, again leaving much of the missing disinflation unexplained. In short, even if we accept the possibility of a change in slope (which is

statistically tenuous and unexplained by economic fundamentals), this explanation can quantitatively account for only a fraction of the missing disinflation.

V Inflation Expectations

After the level of real economic activity and the slope of the Phillips curve, the third source of a potential explanation for the missing disinflation within the context of the Phillips curve is through the behavior of firms' inflation expectations. A key limitation of inflation expectations data is that there is no survey focused explicitly on the beliefs of firms. While reliable data exist on the inflation forecasts of households (U. of Michigan Survey of Consumers), professional forecasters (Survey of Professional Forecasters, Livingston Survey), and central bankers (Greenbook forecasts), there is no comparable data for firms whose price-setting decisions determine inflation dynamics in the economy. Despite this, we show in this section that the most likely source of the missing disinflation lies precisely in the inflation expectations of firms.

5.1 Alternative Measures of Inflation Expectations and the Missing Disinflation

The absence of inflation forecasts on the part of firms could be a severe constraint if their expectations differ significantly from those of other agents. Is there any evidence of important differences in beliefs across agents in the economy for whom we have data? Panel A of Figure 6 plots the time series of mean inflation forecasts for professional forecasters (SPF forecasts of year-ahead annual CPI inflation) and those of households (U. of Michigan Survey of Consumers forecast of price changes over the next 12 months) since 1980. In addition, we plot inflation forecasts extracted from asset prices as a measure of the beliefs of financial market participants.⁹ While forecasts from asset prices have tracked those of professional forecasters closely over most periods, households have reported inflation forecasts which have differed noticeably from those of professionals and financial market participants on a number of occasions. For example, households reported higher inflation forecasts for much of the mid-1990s, in 2000, and systematically so since 2003. But the forecasts of households appear to differ by more than just a fixed amount: we can also observe quite different dynamics on a number of instances. For example, households reported a much larger increase in inflation forecasts in 2008 than did professional forecasters and also reported much larger declines immediately thereafter. More importantly, whereas professional forecasters and financial market participants have reported near-constant year ahead inflation forecasts since 2009, households have been reporting rising inflation forecasts over the same period, with the mean forecast rising from 2.5% in 2009 to a peak of 5% in 2011 and remaining in the range of 4% after 2011.

⁹ The series of inflation expectations from asset prices is produced by the Federal Reserve Bank of Cleveland. The method for the constructing these expectations is described in Haubrich et al. (2008).

Because we do not directly observe firms' inflation forecasts, these differences in inflation expectations between households and professional forecasters suggest that one should be wary of assuming that the expectations of firms are necessarily well-proxied by professional forecasts. One might expect, for example, very large firms to have professional forecasters on staff or to rely on the services of professional forecasters to guide their economic decisions. But this need not be the case for small and medium enterprises for whom the gains from having precise information about aggregate conditions may be small (especially relative to local or industry-specific conditions), as in Mackowiak and Wiederholt (2009). For such firms, household forecasts could very well be a better proxy of their beliefs than professional forecasts.

Does it matter for the Phillips curve and the missing disinflation whether one assumes that firms hold beliefs closer to those of professional forecasters or households? We showed in Panel E of Figure 1 that using professional forecasts of inflation did not meaningfully affect the estimated slope of the historical Phillips curve or the presence of missing disinflation during the Great Recession. In Panel B of Figure 6, we present the Phillips curve relationship between the unemployment gap and the difference between CPI inflation and household expectations of inflation. Several facts stand out. First, in the pre-Great Recession period, the relationship between unemployment gaps is systematically negative, and unlike the evidence with SPF forecasts, there is no evidence of a decline in the slope of the Phillips curve over time. Second, the Phillips curve is flatter than that found with SPF forecasts or backward-looking expectations but significantly different from zero. Third, there is no evidence of missing disinflation during the Great Recession once one conditions on household forecasts: this reflects both a flatter Phillips curve in the pre-Great Recession period and higher levels of inflation expectations between 2009 and 2011 than when using either professional or backward-looking forecasts. Panel C in Figure 6 plots the predicted time series of inflation during the Great Recession period (given actual unemployment gaps and actual expectations) using SPF forecasts, backward-looking expectations and household expectations. While using either backward or professional forecasts yields predictions of inflation that are much lower than actually experienced between 2009 and 2011, using household inflation forecasts eliminates this and yields a prediction of inflation that averages around 2-3% over this period. Thus, if the forecasts of price-setting firms have been more in line historically with those of households than professional forecasters, then one could fully explain the missing disinflation through their inflation expectations.

Is the ability of household inflation expectations to resolve the missing disinflation occurring because of the flatter estimated slope in pre-Great Recession periods or by the behavior of household expectations during the Great Recession? In Panel D of Figure 6, we present two additional counterfactuals paths of inflation to distinguish between these two possibilities. First, we use the SPF inflation expectations combined with the estimated slope of the Phillips curve from household expectations: we find that the predicted level of inflation is almost identical to that of SPF inflation expectations with SPF estimate of the

slope of the Phillips curve. Thus, the slightly smaller estimated slope of the Phillips curve found using the household expectations has almost no effect on predicted inflation. Second, we use the household inflation expectations combined with the estimated slope of the Phillips curve from SPF expectations: we find that the predicted level of inflation is very close to that of household expectations combined with household estimate of the slope of the Phillips curve. Thus, it is the specific behavior of household inflation expectations during and since the Great Recession which can account for the missing disinflation.

5.2 Are Firms' Inflation Forecasts Well Represented by Household Inflation Forecasts?

The evidence presented above that the missing disinflation can be explained through household forecasts is, of course, only suggestive. How can we discern whether firms' inflation forecasts tend to be better proxied by household forecasts than professional forecasts? One possibility is to use the Phillips curve itself to answer this question, since the link between inflation and real economic activity stems from the pricing decisions of firms and their beliefs about future macroeconomic outcomes. Specifically, we can estimate a nested Phillips curve

$$\pi_t = \beta_1 E_t^{MSC} \pi_{t+h} + \beta_2 E_t^{SPF} \pi_{t+h} + \kappa x_t + \varepsilon_t \quad (7)$$

which includes forecasts of both households and professional forecasters along with the unemployment gap. If firms' forecasts are better proxied by household forecasts when they set prices, then one would expect to find $\beta_1 \approx 1, \beta_2 \approx 0$ while the null that their forecasts are better proxied by professional forecasts is that $\beta_1 \approx 0, \beta_2 \approx 1$.

Because the measure of inflation which likely corresponds most closely to household inflation forecasts is the CPI, we focus on the period since 1981 for which SPF forecasts of CPI inflation are available. We use SPF forecasts of inflation over the next four quarters ($E_t^{SPF} \pi_{t+4,t+1} = \frac{1}{4} E_t^{SPF} (\pi_{t+1} + \pi_{t+2} + \pi_{t+3} + \pi_{t+4})$) for comparison with household forecasts which are specified over the next 12 months. We estimate several versions of this specification: including and excluding the Great Recession, using the unemployment rate ($x_t = UE_t$) or the unemployment gap ($x_t = UE_t^{gap}$), unrestricted and restricted coefficients on forecasts ($\beta_1 + \beta_2 = 1$), and controlling for contemporaneous oil price changes or not.

The results are presented in Table 2 and are largely insensitive to the empirical specification. The key finding is that across specifications, household forecasts receive a weight of around 1 which is significantly different from zero whereas professional forecasts receive a weight of close to 0, for which we can generally not reject the null of zero coefficient. Thus, household forecasts appear to be a more relevant measure of inflation forecasts for the Phillips curve than professional forecasts. In Appendix Table 1, we document that household inflation forecasts similarly dominate backward-looking forecasts. Since the underlying mechanism for the Phillips curve reflects firms' expectations of future aggregate outcomes,

these results suggest that it is indeed reasonable to treat firms' forecasts as more closely approximated by household forecasts than those of professional forecasters.

A second approach to assessing whether firms' beliefs are better approximated by household forecasts or professional forecasts is via quantitative surveys of firms' expectations. While no such data exists for the U.S., in ongoing work (Coibion, Gorodnichenko and Kumar 2014) we are conducting a survey of firms in New Zealand which includes questions about their inflation expectations. While the survey will take some time to complete, we first did a trial run of the survey questions in September 2013 on sixty randomly drawn firms (twenty manufacturing, twenty retail firms, and twenty financial and business service firms) from which we can draw some preliminary inference about the properties of firms' inflation expectations. Each of these firms was contacted by phone and the general manager provided detailed responses to a number of questions. One such question was "During the next twelve months, by how much do you think prices will change overall in the economy? Please provide a quantitative answer." This question is almost identical to that asked of households in household surveys of inflation expectations and therefore allows us to compare moments of household and firm forecasts at one point in time.

We present some summary statistics about firms' answers to these questions in Table 3, along with comparable forecasts from households, professional forecasters, and the central bank of New Zealand, all from September 2013. The survey of households is run by the Reserve Bank of New Zealand and is a monthly survey which asks approximately 1,000 households about their expectations of inflation over the next twelve months.¹⁰ Professional forecasts are from Consensus Economics and covers fifteen professional forecasters of the New Zealand economy. Because these forecasts are for calendar years, we impute individual 12-month ahead forecasts as $\frac{1}{4} \times E_{09/2013}\pi_{2013} + \frac{3}{4} \times E_{09/2013}\pi_{2014}$. The Reserve Bank of New Zealand also provides forecasts of annual CPI inflation in its Monetary Reports, so we include its forecast of annual CPI inflation for September 2014 from the September 2013 report.

While annual CPI inflation in New Zealand in September 2013 was running at only 0.7%, the Reserve Bank was forecasting a rise in prices of 1.7% over the next twelve months. Professional forecasters were anticipating a similar rise of 1.9%. The standard deviation of inflation forecasts across professional forecasters was very low at 0.2%, with the lowest forecast being 1.5% and the highest being 2.1%. In contrast, households were expecting a much higher level of inflation over the same period, with the mean forecast across all households being 5.3%. The Reserve Bank of New Zealand presents a truncated version of household expectations in its Monetary Report, dropping all forecasts of inflation which are less than or equal to -2% or greater than or equal to 15%. The mean forecast across this subset of households was 3.1%, still well above that of professionals or the central bank. More strikingly, the cross-sectional dispersion of

¹⁰ We are grateful to Graham Howard from the Reserve Bank of New Zealand for providing detailed statistics from the September 2013 survey of households.

forecasts across households was much larger than that of professionals, with a cross-sectional standard deviation of 5.3% for all households and 1.7% for the truncated set of households.

The large dispersion of household forecasts relative to professionals is a typical characteristic. We produce equivalent statistics for the U.S., using the February 2013 Michigan Survey of Consumers for households (the most recent date for which underlying microdata are available at the time of writing this paper), professional forecasts of U.S. CPI inflation from the February 2013 Consensus Economics and the FOMC midpoint forecast of PCE inflation from the March 2013 projections. Both the professional and central bank forecasts are very close to those of New Zealand, but again the household forecasts have both a higher mean and much higher dispersion of forecasts, on the same order as that observed for households in New Zealand.

How do firms' forecasts compare to professionals and households in New Zealand? We provide summary statistics for year-ahead forecasts of all firms, all firms with the same truncation as used by the Reserve Bank of New Zealand, the subset of 40 non-financial firms and this subset truncated in the same way. Note that the truncation of forecasts eliminates only one manufacturing firm and no retail firms, but removes eleven out of twenty financial and business service firms. The firms in the sample vary significantly by age (average age of 23 years with minimum of 3 years and maximum of 155 years) and size (the number of full-time employees is 23 on average, with a minimum of 7 and a maximum of 85). Like households, average inflation forecasts for firms were much higher than those of professional forecasters, with median forecasts around 5%. More strikingly, the dispersion of forecasts is of the same order of magnitude as that of households and much larger than anything observed among professional forecasters. Thus, at least along this key dimension which differentiates household and professional forecasts, the evidence suggests that inflation forecasts of firms are much more similar to those of households than those of professional forecasters.

5.3 Why Have Household Inflation Forecasts Evolved Differently in Recent Years?

The results in the previous sections document that one can fully explain the missing disinflation if firms held approximately the same expectations as households, and that this is likely to be a reasonable description in practice. But why did households hold such different beliefs than professional forecasters? Our suggested answer can be seen in Panel A of Figure 7. Household inflation forecasts have tracked the price of oil extremely closely since the early 2000s, with almost all of the short-run volatility in inflation forecasts corresponding to short-run changes in the *level* of oil prices. From January 2000 to March 2013, for example, the correlation between the two series was 0.74. In contrast, the correlation between SPF inflation forecast and oil price over the same period was -0.12. The strong sensitivity of consumers' inflation

expectations to oil price has historically been strong: the correlation between MSC inflation expectations and real oil price over 1960-2000 was 0.67.

To assess the link between household inflation expectations and commodity prices more formally, we regress the difference between households' mean inflation forecast and that of professional forecasters on measures of commodity prices, both in levels and first-differences. For consistency in forecasts, we focus on SPF forecasts of the CPI, which are available since 1981. The results are presented in Table 5. First, we find that the level of the oil price (West Texas Intermediate) is a statistically significant predictor of the difference in inflation forecasts, with higher oil prices being associated with higher inflation forecasts by households relative to professional forecasters. Furthermore, the quantitative power of oil prices in accounting for this differential is very large, with the R^2 being slightly over 50%. In contrast, while the change in oil prices is a statistically significant predictor of the difference in inflation forecasts across households and professionals, its quantitative importance is limited, with an R^2 of less than 5%. Thus, it is primarily the level, rather than the change, of oil prices that drives differences in the inflation forecasts of households and professionals.¹¹

We can also verify whether the rise in oil prices can quantitatively account for the increase in household expectations of inflation relative to professional forecasts since 2009. The price of West Texas Intermediate went from under \$40 per barrel in February of 2009 to over \$100 per barrel in early 2012. This sixty dollar rise in the price of oil would have been predicted to raise household inflation forecasts by approximately 1.6 percentage points relative to SPF forecasts. Since household forecasts rose from a low of around 2.5% in early 2009 to 4% since 2011 while professional forecasts remained close to 2%, the rise in oil prices can account for *all* of the rise in household inflation expectations relative to those of professional forecasters over this time period.

This high sensitivity of household inflation forecasts to oil prices relative to that of professional forecasters should not necessarily be interpreted as reflecting "excess sensitivity" on the part of households. Coibion and Gorodnichenko (2012) document that both professional and household inflation forecasts tend to under-respond to oil price shocks relative to the actual response of inflation, but that the forecast errors of households after oil price shocks dissipate more quickly than those of professionals. The results in Table 5 therefore confirm that household forecasts respond more rapidly to oil price movements than professional forecasters.

While it may seem surprising for households to adjust their forecasts more rapidly than professional forecasters, gasoline prices are among the most visible prices for most individuals and they likely play a

¹¹ We found similar qualitative results going back to 1968 by comparing household inflation forecasts with the SPF forecast of the GDP deflator. However, these are harder to interpret because the effects of oil price changes on the CPI and the GDP deflator could themselves be different.

predominant role in affecting people’s perceptions of broader price movements. Indeed, in Table 5, we also find that household inflation forecasts respond more strongly than professional forecasts to food prices, as measured by the World Bank’s food commodity price index, with levels again accounting for much larger fraction of the variance in inflation forecast differentials between households and professionals than first-differences. This is consistent with the idea that households pay attention to the prices which they observe frequently, although regressions including both oil and food prices suggest that oil prices play the predominant role in accounting for the deviation of household inflation forecasts from those of professionals.

To investigate this hypothesis further, we exploit the micro-data of the Michigan Survey of Consumers. Specifically, we use the panel structure of the data and study the revisions in individual inflation forecasts across 6-month periods (two thirds of new households in each month’s survey are interviewed again six months later), thereby controlling for individual fixed effects. We then regress individual changes in inflation forecasts against the change in oil prices over the same time period, i.e.

$$E_t^i \pi_{t,t+12} - E_{t-6}^i \pi_{t-6,t+6} = \alpha + \beta \times \log\left(\frac{OilP_t}{OilP_{t-6}}\right) \times 100 + error_{i,t} \quad (7)$$

where i and t index individuals and time, $E_t^i \pi_{t,t+12}$ is one-year-ahead inflation expectations of individual i at time t , $OilP_t$ is the price of oil (West Texas Intermediate) at time t . Another advantage of focusing on oil prices is that gasoline, unlike e.g. food or clothing, is a homogenous commodity and hence consumers do not need to wrestle with issues related to changes in quality vs. changes in prices.

The first row of Table 6 documents that, across all households, higher oil prices are associated with higher inflation forecasts on the part of individuals: households revise their inflation expectations by 1.6 percent in response to a one percent increase in oil prices. This is a remarkably high sensitivity given that spending on gas and fuel has a relatively small share in total spending for typical households.

In general, one could expect cross-sectional differences in individual responses to oil price changes to reflect (at least) two sources. First, as suggested before, individuals may use highly visible oil/gas prices as a signal of other price changes. One would expect this effect to be stronger for households who purchase gasoline more often. Alternatively, households may not be reporting forecasts of overall inflation of the economy when they respond to surveys but rather expected changes in the price of their own consumption bundles. One would then expect households who spend a large share of their income on gasoline to adjust their inflation forecasts more in response to oil price changes.

With individual data on forecast revisions, we can distinguish between these two possibilities. The Bureau of Labor Statistics (BLS 2013), for example, reports that higher income people on average spend more money on gasoline than lower income people (and therefore purchase gasoline more frequently) but spend a much smaller share of their income on gasoline than lower income groups. The top quintile, for

example, spent more than three times as much as the bottom quintile on gasoline in 2011 (\$4,073 vs. \$1,227 per year), but this was a smaller share of their expenditures than for the bottom quintile (4.3% vs. 5.6%). If the effect of oil price changes on inflation forecasts reflects the effect on the forecasted price of the individual's consumption bundle, then we would expect to see lower income households adjust their inflation forecasts by more than higher income households. But if it instead reflects how frequently an individual observes gasoline prices, one would expect the high income household to adjust their inflation forecast by more. Hence, decomposing the sensitivity of inflation forecast changes to oil price changes by subgroups can help identify the source of households' high sensitivity to oil prices, which appears to have played such a prominent role in explaining the missing disinflation. To this end, we also estimate two additional regressions:

$$E_t^i \pi_{t,t+12} - E_{t-6}^i \pi_{t-6,t+6} = \alpha + \beta \times \log\left(\frac{OilP_t}{OilP_{t-6}}\right) \times 100 + \gamma \times \log\left(\frac{OilP_t}{OilP_{t-6}}\right) \times \left(\frac{BShare_i}{BShare_0}\right) + error_{i,t} \quad (8')$$

$$E_t^i \pi_{t,t+12} - E_{t-6}^i \pi_{t-6,t+6} = \alpha + \beta \times \log\left(\frac{OilP_t}{OilP_{t-6}}\right) \times 100 + \gamma \times \log\left(\frac{OilP_t}{OilP_{t-6}}\right) \times \left(\frac{Spend\$_i}{Spend\$_0}\right) + error_{i,t} \quad (8'')$$

where $BShare_i$ is the share of spending on gasoline for individual i and $Spend\$_i$ is the dollar amount of spending on gasoline for individual i , $BShare_0$ and $Spend\$_0$ are the budget share and dollar spending on gasoline for a baseline group (e.g., the bottom income quintile or age group 18-24). In the Michigan Survey of Consumers we do not observe spending patterns of individual households but we do know if a given household (or household head) belongs to a given income quintile or age group. Using statistics from the Consumer Expenditure Survey, we can assign spending and budget shares to households based on the age or income they report in the Michigan Survey of Consumers. While this approach is likely to introduce errors in how a given household spends its resources, it provides crucial cross-sectional variation in the survey data that can be used to validate time-series results.

In Table 6, we present estimates of equation (7) across households by income quintile. We find that the coefficient on oil price changes is strictly increasing in income: higher income households adjust their inflation forecasts by more than low income households when oil prices change. Given that high income households spend more on gasoline in dollar terms but a smaller fraction of their income, this supports the idea that the sensitivity of household inflation forecasts to oil prices reflects the visibility of gasoline prices. We also consider estimates of equations (8') and (8'') across all households but interacting income quintiles with the change in oil prices: this confirms that higher quintiles are on average more sensitive to oil price changes. Interactions with budget shares instead point in the opposite direction.

We consider a similar decomposition by age group. While gasoline expenditures are falling as a share of income with age, gasoline expenditures in dollar terms are highest for middle-aged individuals (35-54). Consistent with the notion that it is more frequent exposure to gasoline prices that affects individual

sensitivity of inflation forecast revisions to oil price changes, we find that the coefficients on oil price changes are highest for middle-aged individuals and lowest for young adults and seniors. Thus, there is a clear positive relationship between the effect of oil price changes on inflation forecast revisions and dollar expenditures on gasoline (and therefore the frequency of visits to gasoline stations) whereas there is no link between this elasticity and expenditure shares of gasoline.¹²

5.4 Summary and Discussion

The use of household inflation forecasts as the measure of expectations in the Phillips curve can account for the missing disinflation. The primary reason is that household inflation expectations went up sharply between 2009 and 2011, thereby potentially preventing a downward adjustment of prices. We argued that household expectations are likely to be a better proxy for firms' inflation expectations than professional forecasts, thereby justifying their inclusion in the Phillips curve. Our evidence is two-fold. First, in Phillips curve regressions, household inflation forecasts are strictly preferred to either professional forecasts or backward-looking expectations. Second, cross-sectional characteristics of a survey of firms' expectations in New Zealand support the notion that firm forecasts are more akin to those of households than professional forecasts. We also provide a justification for why household expectations behaved so differently than professional forecasters' during the Great Recession: households are much more sensitive to oil price changes when forming inflation forecasts than professional forecasters, and the magnitude of the run-up in oil prices between 2009 and 2011 can fully account for the differential behavior of the expectations between these agents.

Our explanation of the missing disinflation has some unusual implications. One is that advanced economies may well have gotten lucky in the midst of the Great Recession: the surge in oil and commodity prices between 2009 and 2011, driven largely by a resurgence of growth in developing economies (Kilian and Murphy 2012, Alquist and Coibion 2013), boosted inflation expectations at just the right time. While commodity price increases during this period likely had some negative consequences for employment, preventing deflation via higher inflation expectations may well have avoided deflationary spiral mechanisms which, in New Keynesian models, account for the large welfare costs of zero bound episodes (Christiano, Eichenbaum and Rebelo 2011).

A second unusual implication is that a necessary condition for the oil price increases between 2009 and 2011 to have raised household (and firm) inflation expectations was that household expectations were

¹² We explored additional dimensions available in the Michigan Survey of Consumers. For example, we found similar results as with income when we split the sample based on the educational attainment of household heads. That is, it is the dollar amount of spending rather than the budget share that determines households' sensitivity to changes in oil prices. We also found that households with more cars (this information is available for the 1981-2003 period) are more sensitive to changes in oil prices.

not fully anchored. So whereas Bernanke (2010) suggested the anchoring of expectations as a possible explanation for the absence of more disinflation during the Great Recession, our interpretation points precisely in the opposite direction: had household expectations been more anchored like those of professional forecasters, then disinflationary pressures would likely have been significantly more severe. While anchored expectations may still be a desirable outcome for policymakers, our results point to at least one experience in which this was not the case. This experience may prove to be particularly relevant as policymakers increasingly resort to forward guidance in an attempt to affect agents' economic expectations.

VI Conclusion

The absence of significant disinflation during the Great Recession has been a key puzzle for (New) Keynesian models. A Phillips curve representation of the link between nominal and real activity suggests that the severity of the economic downturn should have led to very low inflation or even deflation. The absence of this disinflation has been advocated as evidence for a sizable increase in structural unemployment or as evidence that (New) Keynesian models could not be reconciled with the experience of the Great Recession, casting their usefulness as macroeconomic models into severe doubt.

While a number of potential explanations have been suggested, such as the “anchoring” of expectations, downward wage rigidity, or a flattening of the Phillips curve, we find that none of these is a satisfactory explanation. Instead, we propose a new explanation based on the idea that firms' inflation expectations are best proxied by household expectations and that an expectations-augmented Phillips curve using household forecasts does not display any missing disinflation. Instead, the rise in inflationary expectations between 2009 and 2011—which can be ultimately explained by the large increase in oil prices of this period—can account for why inflation did not fall as much as one might have predicted.

We provide novel evidence for the key assumption underlying this explanation, namely that firm expectations are best proxied by household expectations, both from regressions of the Phillips curve as well as through direct survey evidence of firms' inflation forecasts. But a productive avenue for future research would be to delve more deeply into the key question of how firms form their expectations. Unfortunately, there are no readily available quantitative survey data for firms' expectations, so addressing this question will be challenging. One approach is to consider in more detail the information problems faced by firms to infer from theory how they might be choosing to acquire and process new information, for example as in Reis (2006) or Mackowiak and Wiederholt (2012). An alternative is to develop new survey data of firms' expectations to directly quantify the key properties of their expectations formation process, as we are doing in ongoing work (Coibion, Gorodnichenko and Kumar 2014). Regardless of the methodology employed, successfully characterizing how firms form their expectations strikes us as central to understanding more deeply the link between the nominal and real sides of the economy. But in the meantime, our results suggest

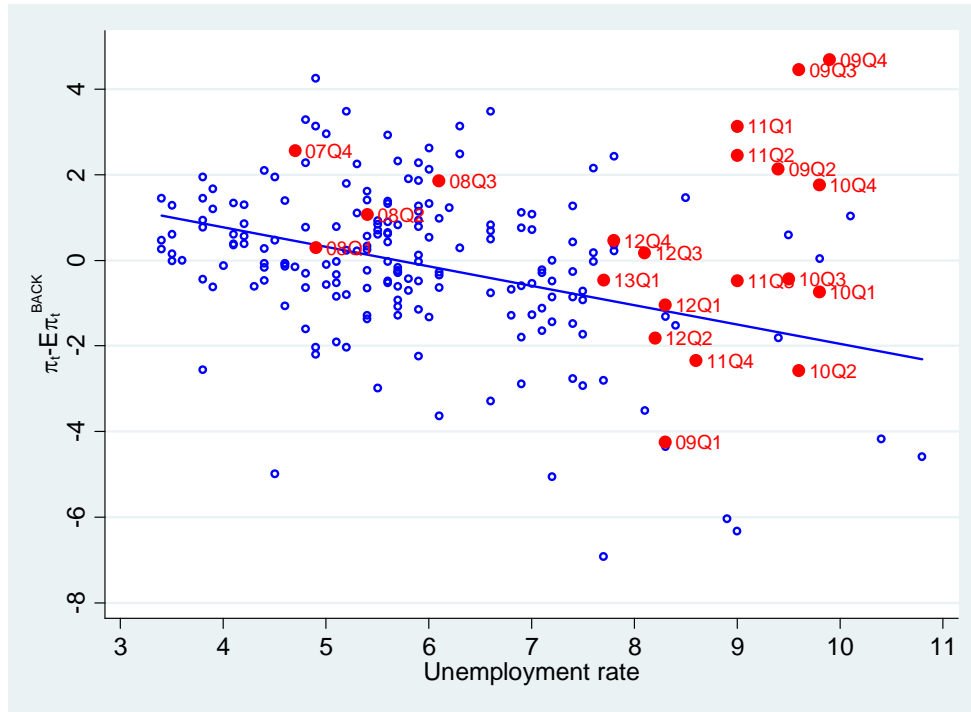
that the Phillips curve remains one of the most useful conceptual frameworks for understanding the relationship between prices and macroeconomic conditions.

References

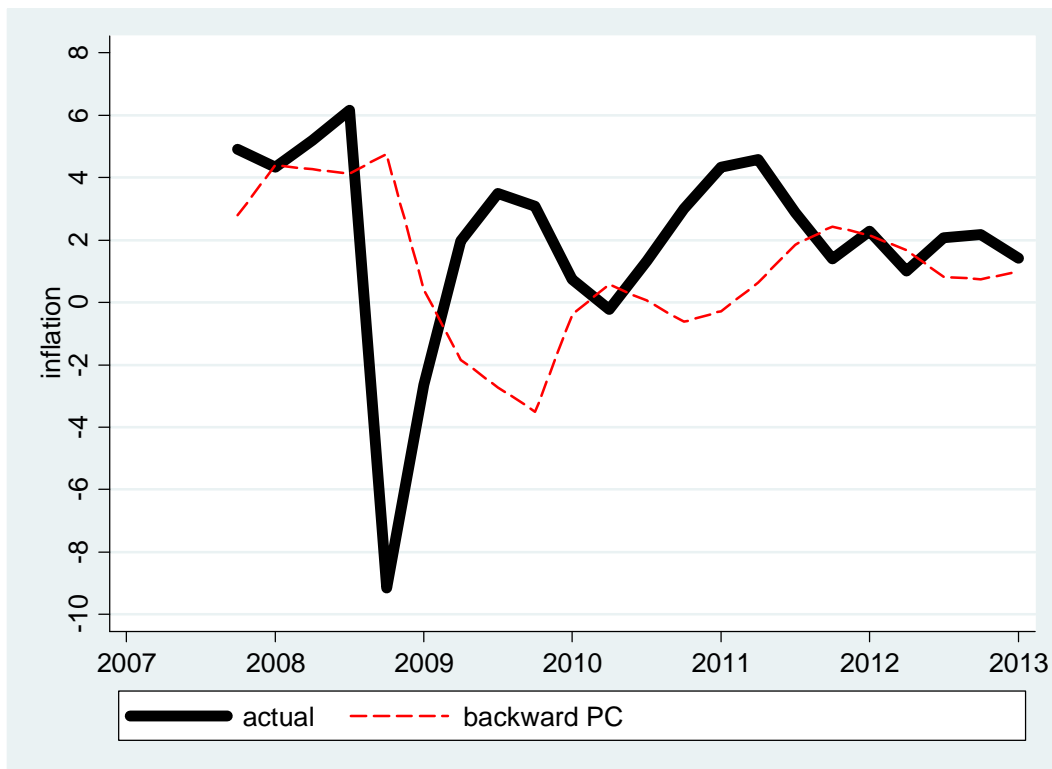
- Aaronson, Daniel, Bhashkar Mazumder, and Shani Schechter, 2010. "What is behind the rise in long-term unemployment?" *Economic Perspectives*, Federal Reserve Bank of Chicago, issue Q II, 28-51.
- Akerlof, George A., William R. Dickens, and George L. Perry, 1996. "The Macroeconomics of Low Inflation," *Brookings Papers on Economic Activity* 27(1), 1-76.
- Alquist, Ronald, and Olivier Coibion, 2013. "The Comovement of Commodity Prices: Sources and Implications," manuscript.
- Ascari, Guido, and Tiziano Ropele, 2007. "Optimal Monetary Policy under Low Trend Inflation," *Journal of Monetary Economics* 54(8): 2568–2583.
- Atkeson, Andrew, and Lee E. Ohanian., 2001. "Are Phillips curves useful for forecasting inflation?" *Quarterly Review*, Federal Reserve Bank of Minneapolis, issue Win, pages 2-11.
- Ball, Laurence, and Sandeep Mazumder, 2011. "Inflation Dynamics and the Great Recession," *Brookings Papers on Economic Activity* 42(1), 337-405.
- Bernanke, Ben, 2010. "The Economic Outlook and Monetary Policy," speech delivered at the Federal Reserve Bank of Kansas City Economic Symposium, Jackson Hole, Wyoming, August 27, 2010.
- Bureau of Labor Statistics (BLS), 2013. "Consumer Expenditures in 2011" Report 1042, April 2013.
- Calvo, Guillermo A., 1983. "Staggered prices in a utility-maximizing framework," *Journal of Monetary Economics*, 12(3), pages 383-398.
- Christiano, Lawrence, Martin Eichenbaum, and Charles L. Evans, 2005. "Nominal Rigidities and the Dynamic Effects of a Shock to Monetary Policy," *Journal of Political Economy*, 113(1), 1-45.
- Christiano, Lawrence, Martin Eichenbaum, and Sergio Rebelo, 2011. "When Is the Government Spending Multiplier Large?" *Journal of Political Economy* 119(1), 78-121.
- Coibion, Olivier, Yuriy Gorodnichenko, and Johannes Wieland, 2012. "The Optimal Inflation Rate in New Keynesian Models: Should Central Banks Raise Their Inflation Targets in Light of the Zero Lower Bound?" *Review of Economic Studies* 79(4), 1371-1406.
- Coibion, Olivier, and Yuriy Gorodnichenko, 2011. "Monetary Policy, Trend Inflation, and the Great Moderation: An Alternative Interpretation," *American Economic Review* 101(1), 341-370.
- Coibion, Olivier, and Yuriy Gorodnichenko, 2012. "What Can Survey Forecasts Tell Us about Information Rigidities?" *Journal of Political Economy* 120(1), 116 - 159.
- Coibion, Olivier, Yuriy Gorodnichenko, and Dmitri Koustas, 2013. "Amerisclerosis? The Puzzle of Rising U.S. Unemployment Persistence," forthcoming in *Brookings Papers on Economic Activity*.
- Coibion, Olivier, Yuriy Gorodnichenko, and Gee Hee Hong, 2012. "The Cyclicalities of Sales, Regular, and Effective Prices: Business Cycle and Policy Implications," NBER WP w18273.
- Coibion, Olivier, Yuriy Gorodnichenko, and Saten Kumar, 2014. "The Macroeconomic Expectations of Firms: New Evidence from a Quantitative Survey," work in progress.
- Daly, Mary C., Bart Hobijn, Ayşegül Şahin, and Robert G. Valletta. 2012. "A Search and Matching Approach to Labor Markets: Did the Natural Rate of Unemployment Rise?" *Journal of Economic Perspectives* 26(3): 3-26.
- Daly, Mary, Bart Hobijn, and Brian Lucking, 2012. "Why Has Wage Growth Stayed Strong?" *FRBSF Economic Letter* 2012-10, April 2, 2012.
- Dotsey, Michael, Robert G. King, Alexander L. Wolman, 1999. "State-Dependent Pricing and the General Equilibrium Dynamics of Money and Output," *Quarterly Journal of Economics* 114(2), 655-690.
- Elsby, Michael, Bart Hobijn, and Aysegul Sahin, 2013. "The Decline of the U.S. Labor Share," forthcoming in *Brookings Papers on Economic Activity*.
- Elsby, Michael, Bart Hobijn, and Ayşegül Şahin. 2010. "The Labor Market in the Great Recession." *Brookings Papers on Economic Activity* (Spring): 1–48.
- Erceg, Christopher, Christopher Gust, and David López-Salido, 2007. "The Transmission of Domestic Shocks in Open Economies," in *International Dimensions of Monetary Policy*, pages 89-148, National Bureau of Economic Research, Inc.

- Fernald, John, 2012. "Productivity and potential output before, during, and after the Great Recession," Working Paper Series 2012-18, Federal Reserve Bank of San Francisco.
- Friedman, Milton, 1968. "The Role of Monetary Policy," *American Economic Review* 58, 1-17.
- Gali, Jordi and Mark Gertler, 1999. "Inflation Dynamics: A Structural Econometric Analysis," *Journal of Monetary Economics* 44(2), 195-222.
- Gali, Jordi, 2008. *Monetary Policy, Inflation and the Business Cycle: An Introduction to the New Keynesian Framework*, Princeton University Press.
- Gertler, Mark, Jordi Gali, and Richard Clarida, 1999. "The Science of Monetary Policy: A New Keynesian Perspective," *Journal of Economic Literature* 37(4), 1661-1707.
- Gorodnichenko, Yuriy, 2008. "Endogenous Information, Menu Costs, and Inflation Persistence," NBER WP 14184.
- Haubrich, J., G. Pennacchi, and P. Ritchken, 2008. "Estimating Real and Nominal Term Structures using Treasury Yields, Inflation, Inflation Forecasts and Inflation Swap Rates," FRB Cleveland WP 08-10.
- International Monetary Fund (IMF), 2013. "The Dog That Didn't Bark: Has Inflation Been Muzzled or Was It Just Sleeping," Chapter 3 in *World Economic Outlook*, April 2013.
- Karabarbounis, Loukas, and Brent Neiman, 2013. "The Global Decline of the Labor Share," NBER Working Paper 19136.
- Kilian, Lutz, and Daniel P. Murphy, 2012. "Why Agnostic Sign Restrictions Are Not Enough: Understanding The Dynamics Of Oil Market VAR Models," *Journal of the European Economic Association* 10(5), 1166-1188.
- King, Robert G., and Mark W. Watson, 2012. "Inflation and Unit Labor Cost," *Journal of Money, Credit and Banking* 44, 111-149.
- Klenow, Peter J., and Oleksiy Kryvtsov, 2008. "State-Dependent or Time-Dependent Pricing: Does It Matter for Recent U.S. Inflation?" *Quarterly Journal of Economics* 123(3), 863-904.
- Llaudes, Ricardo, 2005. "The Phillips Curve and Long Term Unemployment," ECB Working Paper 441.
- Mackowiak, Bartosz, and Mirko Wiederholt, 2009. "Optimal Sticky Prices under Rational Inattention," *American Economic Review* 99(3), 769-803.
- Mackowiak, Bartosz, and Mirko Wiederholt, 2012, "Business Cycle Dynamics under Rational Inattention," manuscript.
- Mankiw, N. Gregory and Ricardo Reis. "Sticky Information Versus Sticky Prices: A Proposal To Replace The New Keynesian Phillips Curve," *Quarterly Journal of Economics*, 117(4), 1295-1328.
- Nakamura, Emi, and Jón Steinsson, 2008. "Five Facts About Prices: A Reevaluation of Menu Cost Models," *Quarterly Journal of Economics* 123(4), 1415-1464.
- Reis, Ricardo, 2006. "Inattentive Producers," *Review of Economic Studies*, 73 (3), 793-821.
- Roberts, John M., 1997. "Is Inflation Sticky?" *Journal of Monetary Economics*, 39(2), 173-196.
- Taylor, John B, 1980. "Aggregate Dynamics and Staggered Contracts," *Journal of Political Economy*, 88(1), pages 1-23.
- Woodford, Michael, 2003. *Interest and Prices: Foundations of a Theory of Monetary Policy*, Princeton University Press, 2003.

FIGURE 1: THE MISSING DISINFLATION
 Panel A: CPI Inflation and U.S. Unemployment



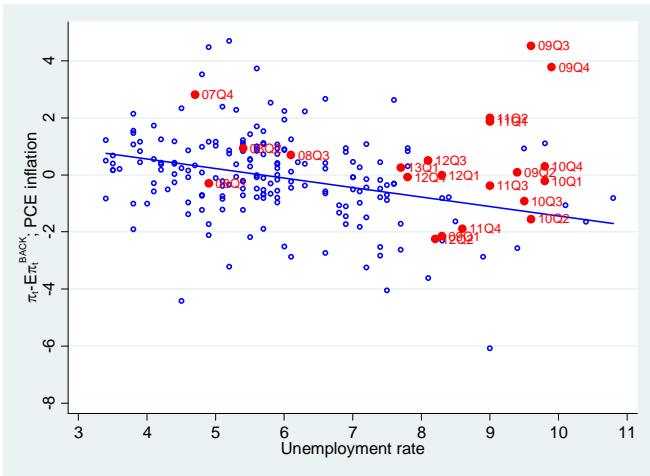
Panel B: CPI Inflation and Predicted Inflation from Phillips Curve



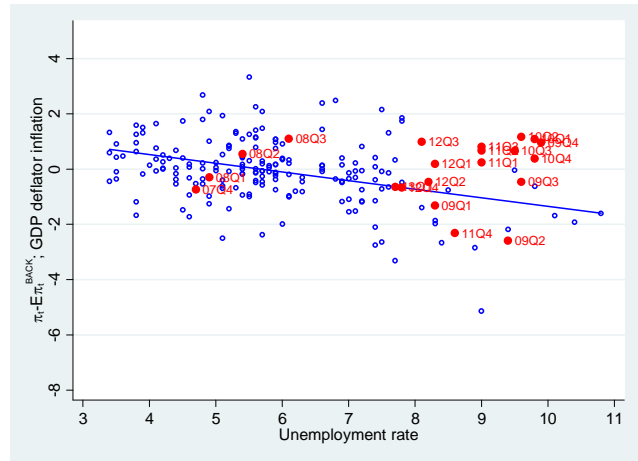
Notes: Panel A shows the scatter plot of inflation surprises ($\pi_t - E_t \pi_t^{BACK}$) vs. unemployment rate. $E_t \pi_t^{BACK}$ is calculated as in equation (2). Blue, empty circles show observations for 1960Q1-2007Q3. Red, filled circles show observations for 2007Q4-2013Q1. Blue, solid line shows predicted inflation surprises as a function of unemployment rate in the linear regression. Inflation surprises for 2008Q4 is outside the range of the figure and is not reported. Panel B plots time series of actual CPI inflation rate (annualized; black thick line) and CPI inflation rate predicted by the Phillips curve (equation (1); red dash line) which is estimated on the 1960Q1-2006Q3 sample.

FIGURE 2: ROBUSTNESS OF THE MISSING DISINFLATION

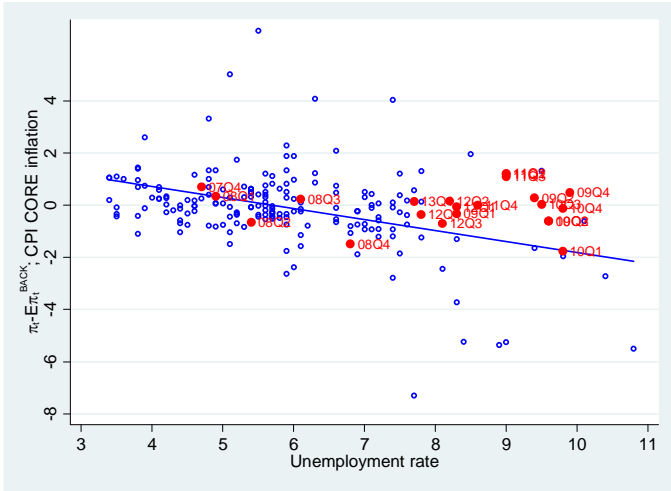
Panel A: PCE Inflation



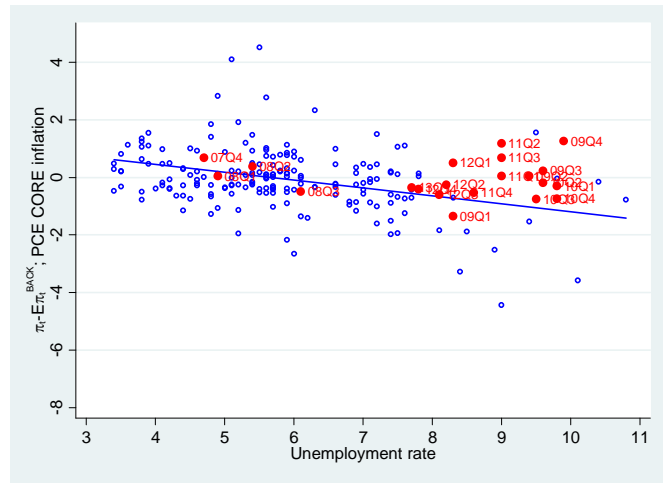
Panel B: GDP Deflator Inflation



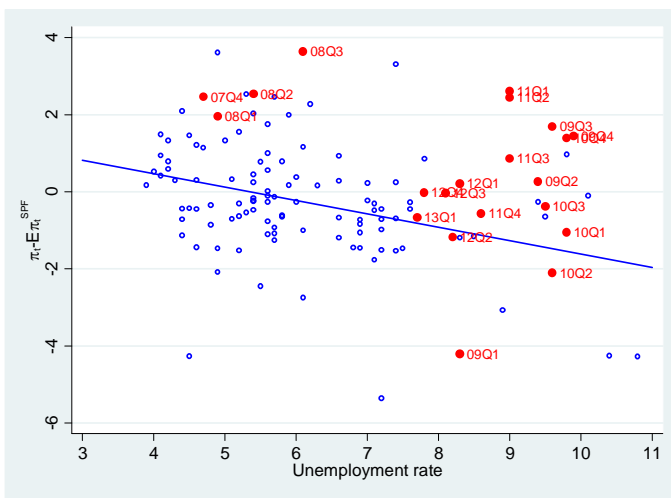
Panel C: Core CPI Inflation



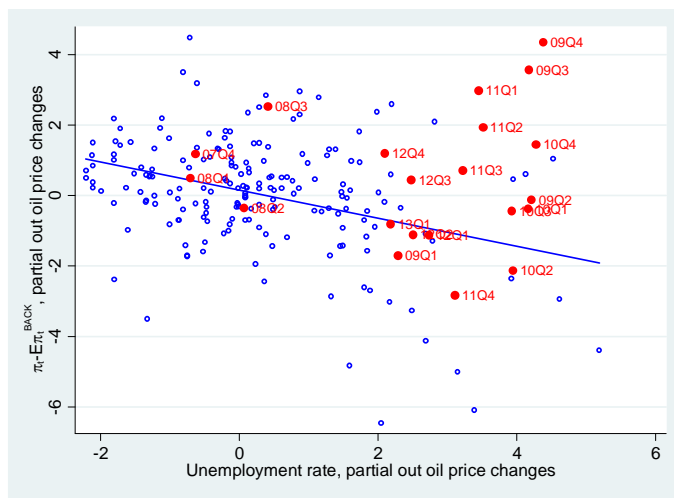
Panel D: Core PCE Inflation



Panel E: SPF Inflation (CPI) Forecasts



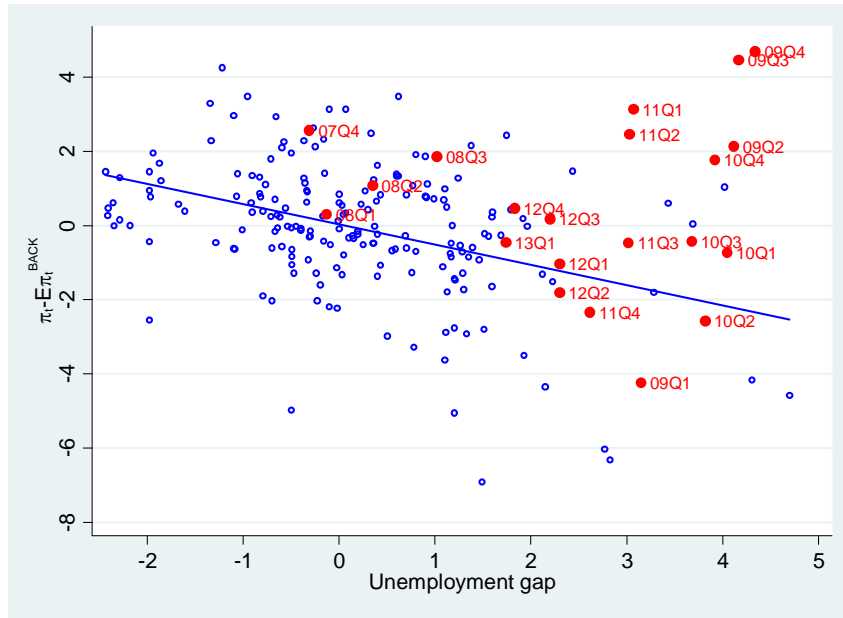
Panel F: Controlling for Oil Prices



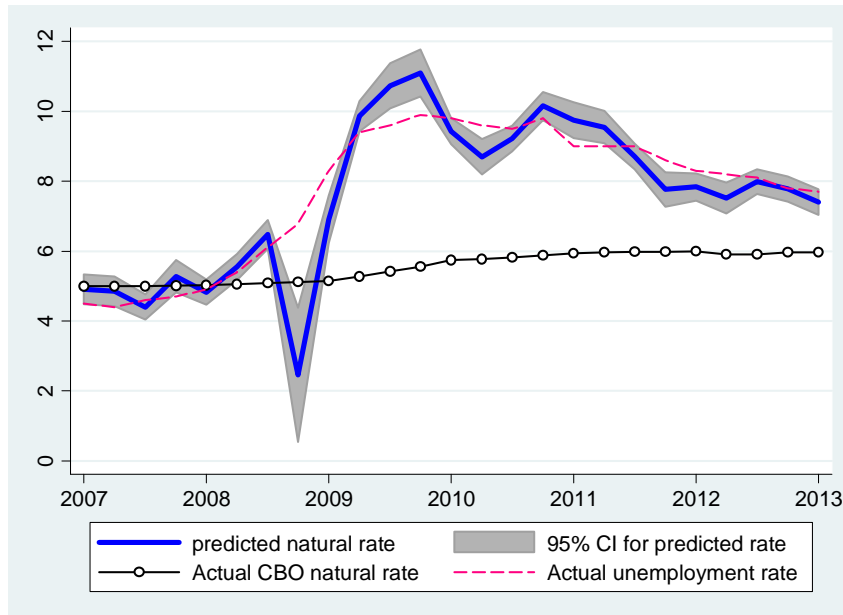
Notes: See notes for Figure 1 and the text for more details.

FIGURE 3: DOES THE MISSING DISINFLATION REFLECT STRUCTURAL UNEMPLOYMENT?

Panel A: Missing Disinflation with CBO Unemployment Gaps



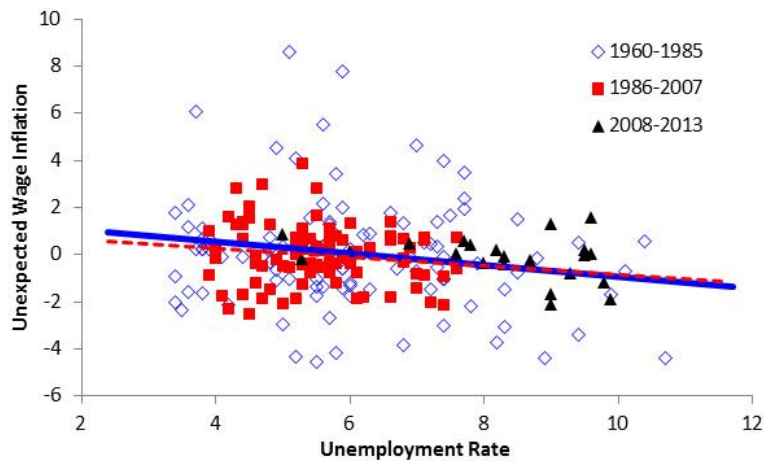
Panel B: Changes in Natural Rate of Unemployment Needed to Explain Missing Disinflation



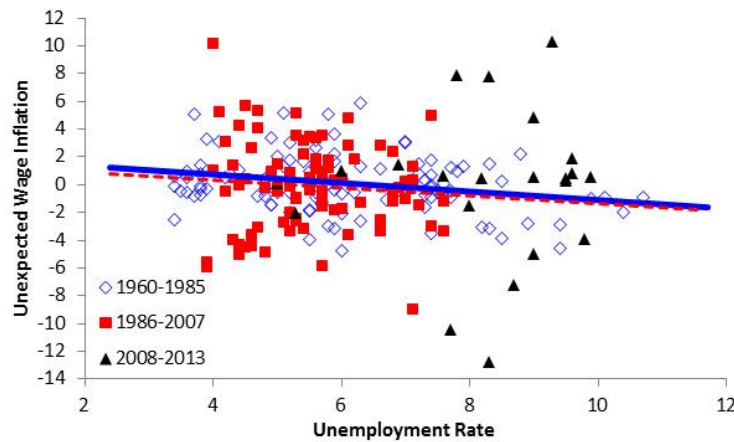
Notes: Panel A plots quarterly levels of the unemployment gap (the difference between actual unemployment and the CBO estimate of the short-term natural rate of unemployment) against quarterly deviations of inflation from expected inflation (measuring the latter as the average inflation rate over the previous four quarters). The trend line uses data from 1960Q1 to 2007Q3. The predicted natural rate of unemployment in Panel B is estimated as follows. First, $UE_t - UE_t^n = \alpha + \beta(\pi_t - E_t \pi_{t+1}) + \varepsilon_t$ is estimated on the 1960Q1-200Q3 sample, where UE_t is the rate of unemployment, UE_t^n is the natural rate of unemployment from the CBO, $E_t \pi_{t+1}$ is the backward-looking measure of inflation expectations. Second, predicted value of the natural rate of unemployment is $\widehat{UE}_t^n = UE_t - \hat{\alpha} - \hat{\beta}(\pi_t - E_t \pi_{t+1})$. The blue, solid line shows the path of \widehat{UE}_t^n , while the red, shaded region shows the 95% confidence interval for the predicted value. The solid, black line with circle markers is the natural rate of unemployment from the CBO. The red, dash line shows the path of actual unemployment rate.

FIGURE 4: IS THERE A MISSING WAGE DISINFLATION?

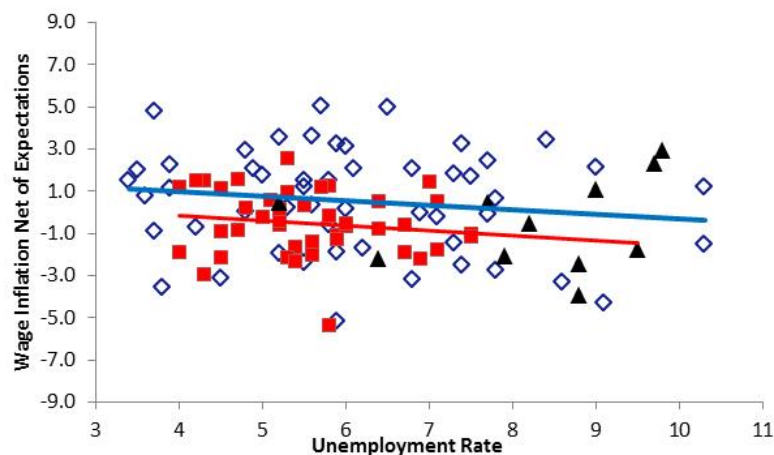
Panel A: Avg. Hourly Earnings, Manufacturing Workers



Panel B: Non-Farm Business Sector Compensation per Hour



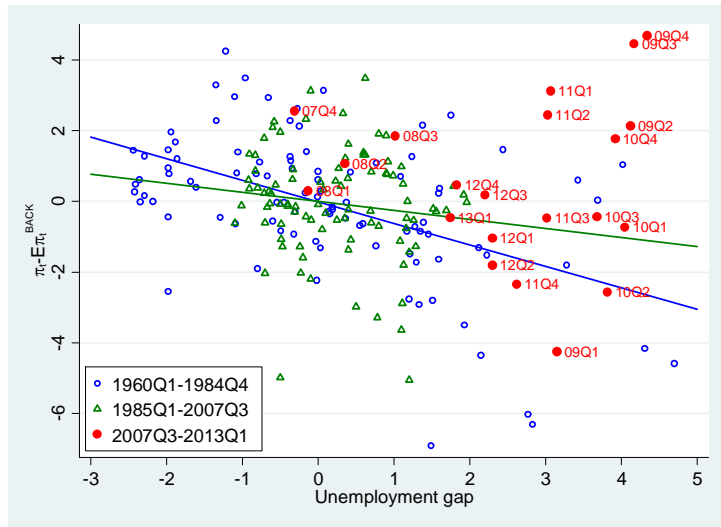
Panel C: Weekly Manufacturing Earnings net of Livingston Professional Forecasts



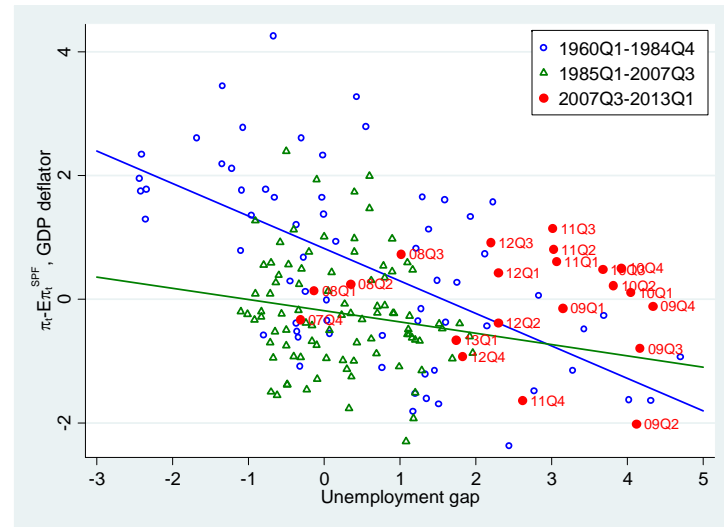
Notes: Each panel plots a measure of wage growth net of wage growth expectations against the unemployment rate, using different measures of wages in each panel. Panels A and B use backward-looking measures of wage expectations. Panel C uses forecasts from the Livingston Survey of Professional Forecasters. Blue lines are average slope for 1960-1985, red lines are average slope for 1986-2007. Panel C uses semiannual data.

FIGURE 5: TIME VARIATION IN THE SLOPE OF THE PHILLIPS CURVE

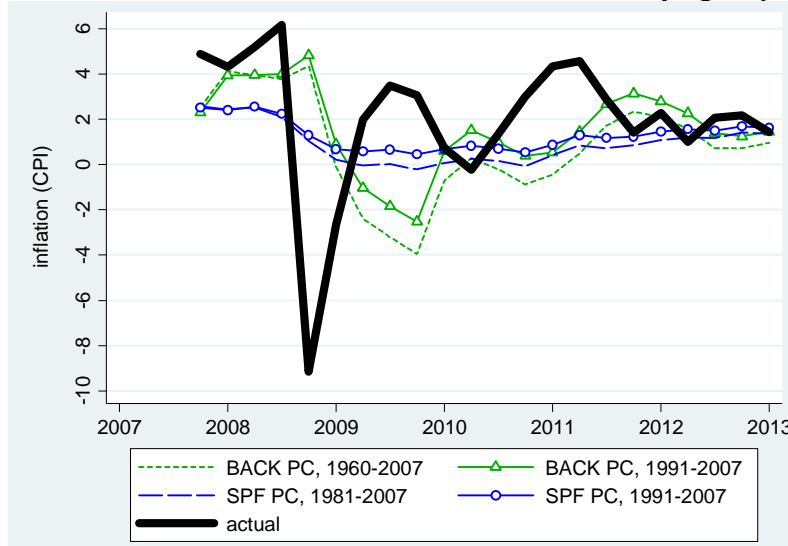
Panel A: Sample Split in mid-1980s, Backward-Looking PC



Panel B: Sample Split in mid-1980s, Forward-Looking PC



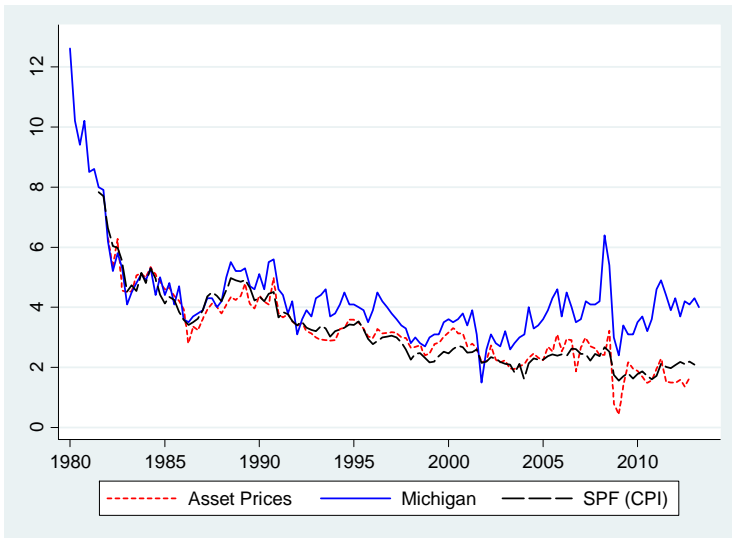
Panel C: Counterfactual Inflation Paths from Time-Varying Slopes



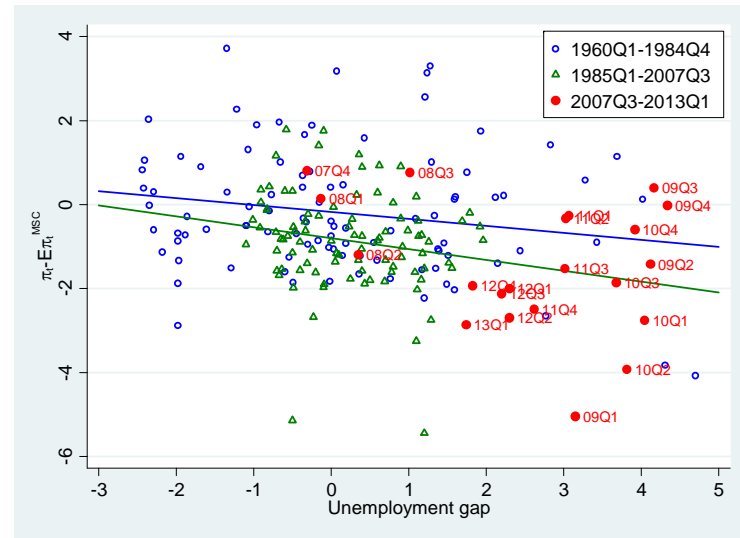
Notes: Panels A and B show changes in the slope of the Phillips curve over time. Panel A uses CPI inflation rate. Panel B using GDP deflator inflation rate. Panel C shows the path of actual inflation and inflation predicted by Phillips curve estimated with forward-looking expectations (SPF) and backward-looking expectations (BACK) and over different time samples.

FIGURE 6: THE PHILLIPS CURVE AND THE MISSING DISINFLATION WITH HOUSEHOLD INFLATION EXPECTATIONS

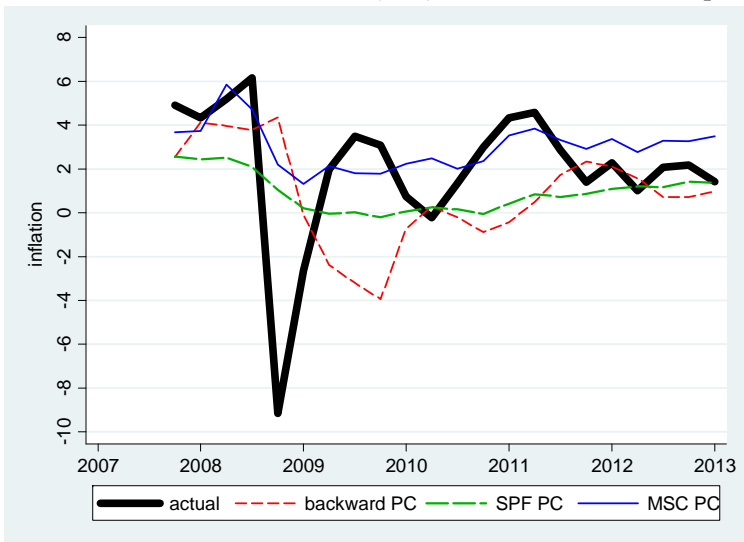
Panel A: Inflation Expectations for Different Economic Agents



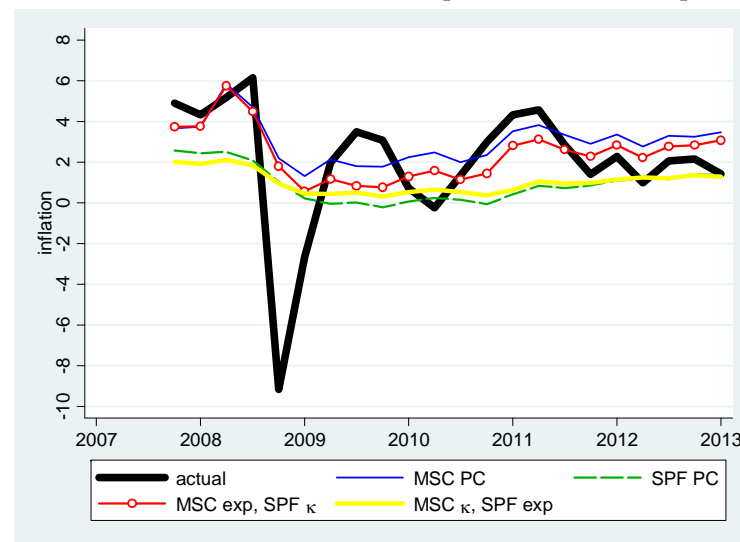
Panel B: Phillips Curve with Household Inflation Expectations



Panel C: Counterfactual Inflation (CPI) Paths for Different Expectations

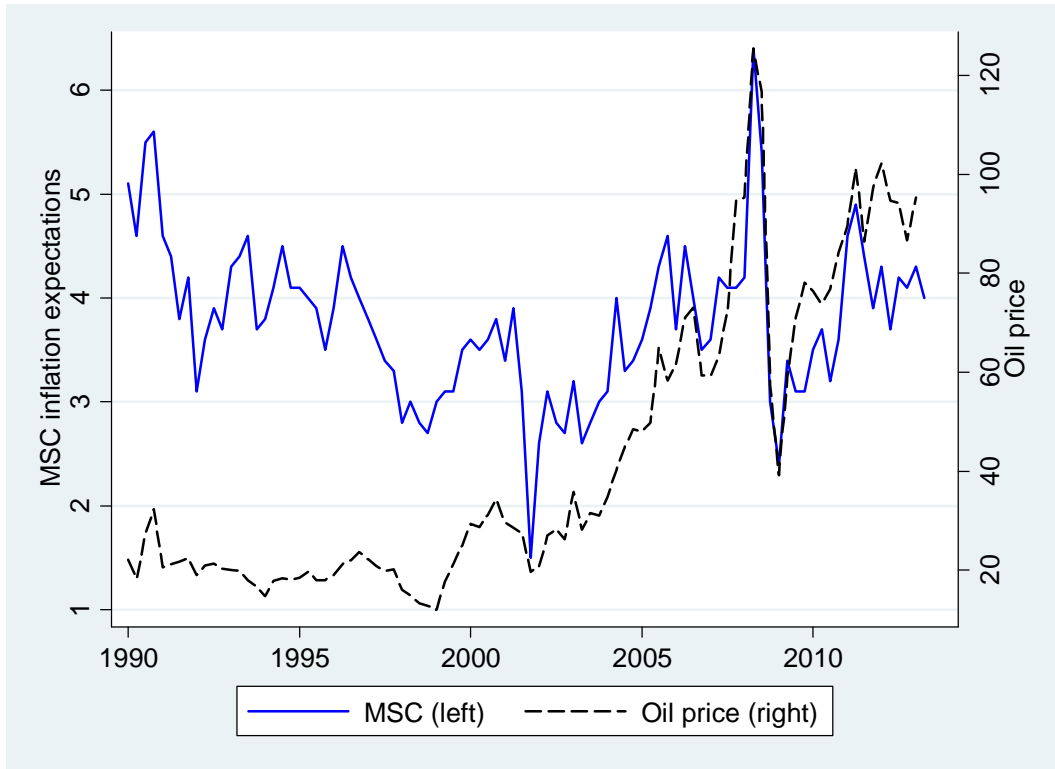


Panel D: Relative Contributions of Slopes and Inflation Expectations



Notes: Panel B shows the scatter plot of inflation (CPI) surprises vs. unemployment gap as well as fitted linear regressions for two sub-periods. Panel C plots actual inflation rate (CPI) as well as inflation rate predicted by Phillips curves (equation (1)) estimated on the pre-Great Recession samples. Phillips curves are estimated with unemployment gap as the forcing variable. Panel D presents decomposition of differences between predicted inflation rates from Phillips curves (equation (1)) estimated with inflation expectations from the Michigan Survey of Consumers (MSC) and Survey of Professional Forecasters (SPF). “XYZ exp” denotes which inflation expectations are used (SPF or MSC), while “XYZ κ ” denotes what data was used to estimate the slope of the Phillips curve. Phillips curves are estimated with unemployment gap as the forcing variable.

FIGURE 7: HOUSEHOLD INFLATION FORECASTS AND OIL PRICES



Notes: Oil Price is the Spot Oil Price for West Texas Intermediate (FRED© name: OILPRICE). MSC inflation expectations is the mean one-year-ahead inflation expectations in the Michigan Survey of Consumers (MSC).

TABLE 1: SUB-SAMPLE STABILITY OF THE SLOPE OF THE PHILLIPS CURVE

| | OLS (1) | IV (2) | OLS (3) | IV (4) |
|----------------------------------------------------------------------------|----------------------|----------------------|----------------------|----------------------|
| Panel A: CPI, backward-looking expectations, 1960Q1-2007Q3 | | | | |
| $UE_t - UE_t^n, \kappa$ | -0.540*** (0.132) | -0.453*** (0.132) | -0.602*** (0.157) | -0.517*** (0.160) |
| $(UE_t - UE_t^n) \times I(\text{year} \geq 1985), \gamma$ | | | 0.346 (0.232) | 0.359 (0.239) |
| $I(\text{year} \geq 1985), \theta$ | | | 0.021 (0.273) | 0.008 (0.274) |
| Observations | 191 | 191 | 191 | 191 |
| R2 | 0.154 | 0.150 | 0.164 | 0.160 |
| $\kappa + \gamma$ | | | -0.256 (0.172) | -0.158 (0.178) |
| Panel B: GDP deflator, backward looking expectations, 1960Q1-2007Q3 | | | | |
| $UE_t - UE_t^n, \kappa$ | -0.369*** (0.085) | -0.343*** (0.090) | -0.418*** (0.102) | -0.399*** (0.108) |
| $(UE_t - UE_t^n) \times I(\text{year} \geq 1985), \gamma$ | | | 0.280** (0.136) | 0.314** (0.145) |
| $I(\text{year} \geq 1985), \theta$ | | | -0.005 (0.172) | -0.015 (0.173) |
| Observations | 191 | 191 | 191 | 191 |
| R2 | 0.168 | 0.167 | 0.182 | 0.181 |
| $\kappa + \gamma$ | | | -0.138 (0.091) | -0.084 (0.097) |
| Panel C: GDP deflator, SPF expectations, 1968Q4-2007Q3 | | | | |
| $UE_t - UE_t^n, \kappa$ | -0.403*** (0.087) | -0.451*** (0.094) | -0.525*** (0.069) | -0.576*** (0.083) |
| $(UE_t - UE_t^n) \times I(\text{year} \geq 1985), \gamma$ | | | 0.344** (0.142) | 0.395** (0.153) |
| $I(\text{year} \geq 1985), \theta$ | | | -1.009*** (0.236) | -1.037*** (0.241) |
| Observations | 156 | 156 | 156 | 156 |
| R2 | 0.165 | 0.163 | 0.311 | 0.309 |
| $\kappa + \gamma$ | | | -0.182 (0.124) | -0.181 (0.129) |

Notes: The estimated specification is given by equation (5). Instrumental Variable (IV) regressions use the first lag of unemployment gap—that is, $(UE_{t-1} - UE_{t-1}^n)$ —as an instrument. Newey-West standard errors are reported in parentheses. ***, **, * indicate significance at 1%, 5%, 10% respectively.

TABLE 2. WHICH EXPECTATIONS BEST PROXY FOR FIRMS' EXPECTATIONS?

| | Pre-Great Recession, 1981Q1-2007Q3 | | | | Full sample, 1981Q1-2013Q1 | | | |
|---------------------------------------------------------|------------------------------------|---------------------|---------------------|---------------------|----------------------------|----------------------|----------------------|----------------------|
| | (1) | (2) | (3) | (4) | (5) | (6) | (7) | (8) |
| Panel A: Unemployment rate | | | | | | | | |
| $E_t \pi_{t+1,t+4}^{MSC}$ | 1.442*** (0.218) | 1.089*** (0.210) | 1.128*** (0.214) | 0.803*** (0.179) | 1.480*** (0.182) | 1.036*** (0.190) | 0.935*** (0.140) | 0.627*** (0.152) |
| $E_t \pi_{t+1,t+4}^{SPF}$ | 0.018 (0.200) | 0.289* (0.171) | -0.128 (0.214) | 0.197 (0.179) | 0.077 (0.136) | 0.361** (0.158) | 0.0650 (0.140) | 0.373 (0.152) |
| UE_t | -0.250** (0.106) | -0.235** (0.096) | -0.077 (0.100) | -0.095 (0.086) | -0.267*** (0.076) | -0.208*** (0.058) | -0.190*** (0.064) | -0.151*** (0.053) |
| $\log\left(\frac{OilP_t}{OilP_{t-1}}\right) \times 400$ | | 0.009*** (0.003) | | 0.010*** (0.002) | | 0.014*** (0.004) | | 0.015*** (0.004) |
| Observations | 105 | 105 | 105 | 105 | 127 | 127 | 127 | 127 |
| R^2 | 0.537 | 0.612 | 0.262 | 0.394 | 0.466 | 0.627 | 0.205 | 0.461 |
| Panel B: Unemployment gap | | | | | | | | |
| $E_t \pi_{t+1,t+4}^{MSC}$ | 1.475*** (0.220) | 1.117*** (0.219) | 1.088*** (0.192) | 0.782*** (0.167) | 1.469*** (0.184) | 1.026*** (0.190) | 0.976*** (0.143) | 0.662*** (0.150) |
| $E_t \pi_{t+1,t+4}^{SPF}$ | -0.079 (0.187) | 0.201 (0.166) | -0.0880 (0.192) | 0.218 (0.167) | 0.024 (0.129) | 0.321** (0.152) | 0.0240 (0.143) | 0.338 (0.150) |
| $UE_t - UE_t^n$ | -0.262** (0.109) | -0.249** (0.099) | -0.160 (0.104) | -0.168* (0.089) | -0.304*** (0.088) | -0.243*** (0.065) | -0.267*** (0.082) | -0.214*** (0.061) |
| $\log\left(\frac{OilP_t}{OilP_{t-1}}\right) \times 400$ | | 0.009*** (0.002) | | 0.010*** (0.002) | | 0.014*** (0.004) | | 0.015*** (0.004) |
| Observations | 105 | 105 | 105 | 105 | 127 | 127 | 127 | 127 |
| R^2 | 0.537 | 0.612 | 0.270 | 0.402 | 0.465 | 0.628 | 0.217 | 0.470 |

Notes: Dependent variable is the annualized rate of inflation (quarter on quarter). $E_t \pi_{t+1,t+4}^{MSC}$ and $E_t \pi_{t+1,t+4}^{SPF}$ are one-year-ahead inflation forecasts from the Michigan Survey of Consumers (MSC) and the Survey of Professional Forecasters (SPF). $OilP$ is the price of oil (Crude Oil Prices: West Texas Intermediate (WTI); FRED: OILPRICE). UE_t is the rate of unemployment. UE_t^n is the natural rate of unemployment from the Congress Budget Office (CBO). Constant is included but not reported. Specifications in columns (3), (4), (7) and (8) impose that the coefficients on $E_t \pi_{t+1,t+4}^{MSC}$ and $E_t \pi_{t+1,t+4}^{SPF}$ sum up to one. Newey-West standard errors are in parentheses. ***, **, * indicate significance at 1%, 5%, 10% respectively.

TABLE 3: PROPERTIES OF INFLATION FORECASTS OF DIFFERENT AGENTS

| | New Zealand (Sept. 2013) | | | United States (Feb. 2013) | | |
|--------------------------------------------------------|--------------------------|--------|----------|---------------------------|--------|----------|
| | Mean | Median | St. Dev. | Mean | Median | St. Dev. |
| Annual CPI Inflation | 0.7 | | | 2.0 | | |
| Central Bank Forecast of Year Ahead Inflation | 1.7 | | | 1.5 | | |
| Professionals' Forecasts of Year Ahead CPI Inflation | 1.9 | 1.9 | 0.2 | 1.9 | 1.8 | 0.3 |
| Households' Forecasts of Year Ahead Inflation | | | | | | |
| All participants | 5.3 | N.A. | 5.4 | 4.4 | 3.0 | 4.4 |
| Truncated | 3.1 | 3.0 | 1.7 | 3.8 | 3.0 | 3.0 |
| Firms' Forecasts of Year Ahead Inflation | | | | | | |
| All participants | 8.8 | 5.0 | 7.8 | | | |
| Truncated | 5.3 | 4.5 | 3.3 | | | |
| Non-Financial Firms' Forecasts of Year Ahead Inflation | | | | | | |
| All participants | 6.1 | 5.0 | 4.0 | | | |
| Truncated | 5.7 | 5.0 | 3.3 | | | |

Notes: Central Bank Forecast for U.S. is for PCE price index, mid-range of central tendencies of 1.5 for 2013 and 1.75 for 2014, yielding $10/12 \times 1.5 + 2/12 \times 1.75 = 1.54$. Annual CPI inflation for New Zealand is for June 2013. All other dates are as reported in Table. Professional forecasts are taken from Consensus Economics' survey. Household forecasts are from Reserve Bank of New Zealand's Survey of Households and the University of Michigan's Survey of Consumers. Firm forecasts are from ongoing work in Coibion, Gorodnichenko and Kumar (2014) using reported forecasts of 60 firms in New Zealand.

TABLE 4: EFFECTS OF OIL AND COMMODITY PRICE CHANGES ON INFLATION FORECASTS

| Dependent variable: $E_t^{MSC} \pi_{t+1,t+4} - E_t^{SPF} \pi_{t+1,t+4}$ | (1) | (2) | (3) |
|----------------------------------------------------------------------------|---------------------|---------------------|---------------------|
| Panel A: Levels | | | |
| $OilP_t$ | 0.026*** (0.002) | 0.024*** (0.005) | |
| $PriceAgro_t$ | | 0.002 (0.004) | 0.016*** (0.002) |
| R^2 | 0.523 | 0.524 | 0.421 |
| Panel B: Growth rates | | | |
| $\log \left(\frac{OilP_t}{OilP_{t-1}} \right) \times 100$ | 0.013** (0.005) | 0.011** (0.005) | |
| $\log \left(\frac{PriceAgro_t}{PriceAgro_{t-1}} \right) \times 100$ | | 0.015 (0.017) | 0.020 (0.016) |
| R^2 | 0.048 | 0.060 | 0.024 |

Notes: The sample period is 1981-2013, 127 observations. $OilP$ is the price of oil (Crude Oil Prices: West Texas Intermediate (WTI); FRED: OILPRICE). $PriceAgro_t$ is the food price index produced by the World Bank. Newey-West standard errors are in parentheses. ***, **, * indicate significance at 1%, 5%, 10% respectively.

TABLE 5: SENSITIVITY OF REVISIONS IN INDIVIDUALS' INFLATION EXPECTATIONS TO CHANGES IN OIL PRICES

| Dependent variable $E_t^i \pi_{t,t+12} - E_{t-6}^i \pi_{t-6,t+6}$ | Main effect, β | | Interaction, γ | | Obs. | R2 | Spending on fuel, annual, CEX, 2011 | |
|----------------------------------------------------------------------|----------------------|---------|-----------------------|---------|--------|-------|----------------------------------------|----------|
| | coef. | s.e. | Coef. | s.e. | | | \$ | Share, % |
| | (1) | (2) | (3) | (4) | | | | |
| Panel A: Full sample | | | | | | | | |
| All | 1.686*** | (0.177) | | | 68,355 | 0.010 | | |
| Panel B: Income quintiles | | | | | | | | |
| HH income quintiles | | | | | | | | |
| 1 (bottom) | 0.665*** | (0.257) | | | 7,883 | 0.001 | 1,227 | 5.6 |
| 2 | 1.488*** | (0.225) | | | 10,979 | 0.007 | 1,981 | 6.2 |
| 3 | 1.956*** | (0.282) | | | 12,841 | 0.013 | 2,694 | 6.4 |
| 4 | 1.965*** | (0.268) | | | 15,918 | 0.014 | 3,295 | 5.7 |
| 5 (top) | 2.066*** | (0.202) | | | 16,926 | 0.018 | 4,073 | 4.3 |
| Interact with \$ | 0.484*** | (0.099) | 0.771*** | (0.248) | 64,547 | 0.010 | | |
| Interact with budget share | 2.629*** | (0.547) | -0.931* | (0.546) | 64,547 | 0.010 | | |
| Panel C: Age groups | | | | | | | | |
| HH head age group | | | | | | | | |
| <25 | 0.628 | (0.428) | | | 13,983 | 0.008 | 1,840 | 6.2 |
| 25-34 | 1.523*** | (0.221) | | | 15,744 | 0.013 | 2,726 | 5.7 |
| 35-44 | 1.947*** | (0.236) | | | 12,924 | 0.013 | 3,188 | 5.6 |
| 45-54 | 1.894*** | (0.288) | | | 10,429 | 0.012 | 3,270 | 5.6 |
| 55-64 | 1.854*** | (0.197) | | | 11,785 | 0.008 | 2,713 | 5.1 |
| 65+ | 1.489*** | (0.192) | | | 13,983 | 0.008 | 1,755 | 4.5 |
| Interact with \$ | 1.433*** | (0.169) | 0.147* | (0.085) | 68,089 | 0.010 | | |
| Interact with budget share | 1.924** | (0.797) | -0.272 | (0.979) | 68,089 | 0.010 | | |

Notes: The table reports estimated equations (7), (8') and (8''). Specification (7) is estimated separately for full sample, by income quintile, and by age group. "Interact with budget share" corresponds to equation (8'). "Interact with \$" corresponds to equation (8''). Standard errors (in parentheses) are clustered by month. Columns (1) and (2) show estimates and standard errors for β in specifications (7), (8') and (8''). Columns (3) and (4) show estimates and standard errors for γ in specifications (8') and (8''). Constants are included but not reported. Columns (7) and (8) report annual dollar amount and budget share of spending on gasoline. These statistics are from the 2011 Consumer Expenditure Survey (BLS 2013). ***, **, *

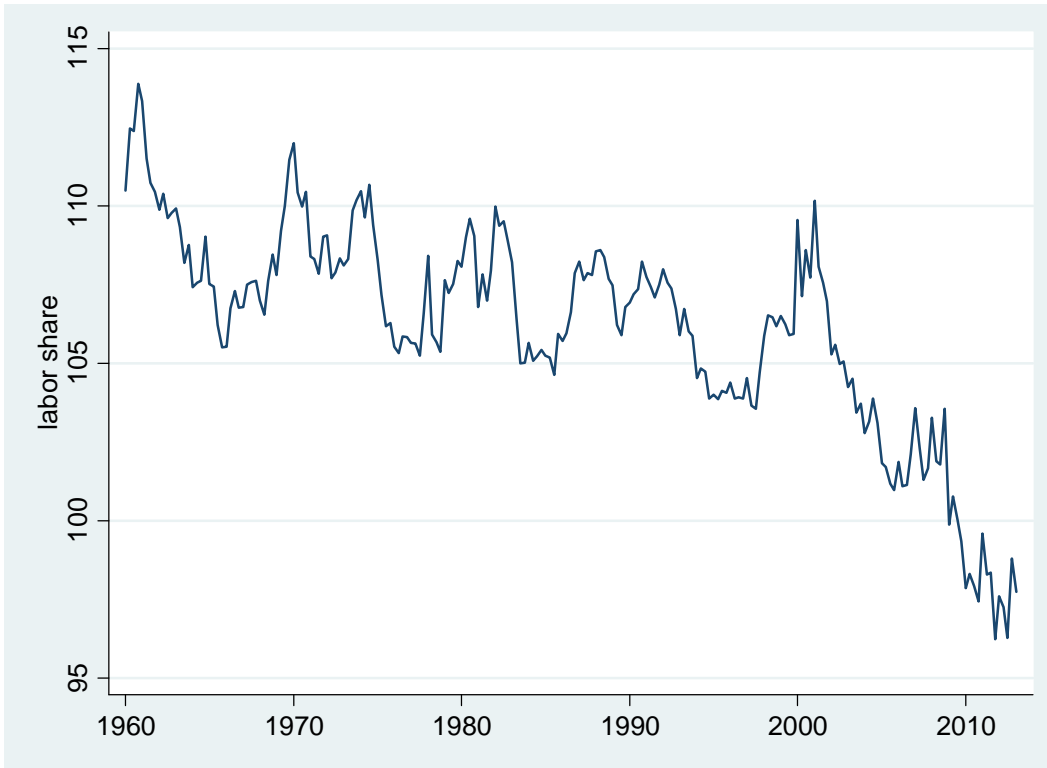
APPENDIX FIGURES AND TABLES

APPENDIX TABLE 1. HOUSEHOLD VS. BACKWARD-LOOKING EXPECTATIONS IN ESTIMATED PHILLIPS CURVES.

| | Pre-Great Recession, 1960Q1-2007Q3 | | | | Full sample, 1960Q1-2013Q1 | | | |
|---------------------------------------------------------|------------------------------------|----------------------|----------------------|----------------------|----------------------------|----------------------|----------------------|----------------------|
| | (1) | (2) | (3) | (4) | (5) | (6) | (7) | (8) |
| Panel A: Unemployment rate | | | | | | | | |
| $E_t \pi_{t+1,t+4}^{MSC}$ | 1.126*** (0.099) | 0.993*** (0.079) | 0.761*** (0.077) | 0.698*** (0.065) | 1.303*** (0.174) | 1.041*** (0.091) | 0.865*** (0.123) | 0.730*** (0.068) |
| $E_t \pi_{t+1,t+4}^{BACK}$ | 0.158** (0.079) | 0.224*** (0.064) | 0.239*** (0.077) | 0.302*** (0.065) | 0.025 (0.129) | 0.175** (0.071) | 0.135 (0.123) | 0.270*** (0.068) |
| UE_t | -0.238*** (0.072) | -0.207*** (0.070) | -0.162** (0.080) | -0.144* (0.074) | -0.238*** (0.058) | -0.203*** (0.050) | -0.189*** (0.062) | -0.167*** (0.052) |
| $\log\left(\frac{OilP_t}{OilP_{t-1}}\right) \times 400$ | | 0.008*** (0.002) | | 0.011*** (0.002) | | 0.012*** (0.004) | | 0.015*** (0.004) |
| Observations | 191 | 191 | 191 | 191 | 213 | 213 | 213 | 213 |
| R2 | 0.846 | 0.864 | 0.456 | 0.558 | 0.786 | 0.830 | 0.434 | 0.590 |
| Panel B: Unemployment gap | | | | | | | | |
| $E_t \pi_{t+1,t+4}^{MSC}$ | 1.097*** (0.097) | 0.962*** (0.077) | 0.743*** (0.076) | 0.684*** (0.062) | 1.279*** (0.172) | 1.017*** (0.090) | 0.873*** (0.129) | 0.740*** (0.072) |
| $E_t \pi_{t+1,t+4}^{BACK}$ | 0.157** (0.076) | 0.228*** (0.061) | 0.257*** (0.076) | 0.316*** (0.062) | 0.020 (0.130) | 0.173** (0.072) | 0.127 (0.129) | 0.260*** (0.072) |
| $UE_t - UE_t^n$ | -0.270*** (0.079) | -0.247*** (0.075) | -0.279*** (0.087) | -0.247*** (0.079) | -0.272*** (0.067) | -0.244*** (0.055) | -0.285*** (0.076) | -0.247*** (0.058) |
| $\log\left(\frac{OilP_t}{OilP_{t-1}}\right) \times 400$ | | 0.008*** (0.002) | | 0.011*** (0.002) | | 0.012*** (0.004) | | 0.015*** (0.004) |
| Observations | 191 | 191 | 191 | 191 | 213 | 213 | 213 | 213 |
| R2 | 0.847 | 0.866 | 0.479 | 0.575 | 0.788 | 0.833 | 0.454 | 0.604 |

Notes: Dependent variable is the annualized rate of inflation (quarter on quarter). $E_t \pi_{t+1,t+4}^{MSC}$ and $E_t \pi_{t+1,t+4}^{BACK}$ are one-year-ahead inflation forecasts from the Michigan Survey of Consumers (MSC) and backward-looking forecasts as described in equation (2) in the text. $OilP$ is the price of oil (Crude Oil Prices: West Texas Intermediate (WTI); FRED: OILPRICE). UE_t is the rate of unemployment. UE_t^n is the natural rate of unemployment from the Congress Budget Office (CBO). Constant is included but not reported. Specifications in columns (3), (4), (7) and (8) impose that the coefficients on $E_t \pi_{t+1,t+4}^{MSC}$ and $E_t \pi_{t+1,t+4}^{BACK}$ sum up to one. Newey-West standard errors are in parentheses. ***, **, * indicate significance at 1%, 5%, 10% respectively.

APPENDIX FIGURE 1. TIME SERIES OF SELECTED MACROECONOMIC VARIABLES
Panel A: Index of labor share, Nonfarm Business Sector (FRED[®] code: PRS85006173)



Panel B. Ratio of Corporate Profits (FRED[®] code: CP) to GDP (FRED[®] code: GDP)

